

open the door to great
machinery and design

AWISA

2016

6-9 July 2016

Melbourne Convention
& Exhibition Centre
South Wharf Melbourne

PREVIEW

The following pages have just some of the
great products and services that will
be on display in Melbourne.

MELBOURNE

AWISA



6-9 JULY

2016

www.awisa.com

AWISA 2016

6-9 July 2016

Melbourne Convention
& Exhibition Centre

South Wharf
Melbourne

SHOW HOURS

Wednesday	6 July 2016	9.00a.m. - 6.00p.m.
Thursday	7 July 2016	9.00a.m. - 6.00p.m.
Friday	8 July 2016	9.00a.m. - 6.00p.m.
Saturday	9 July 2016	9.00a.m. - 4.00p.m.

ADMISSION AND REGISTRATION

Admission is free. AWISA 2016 is a trade-only exhibition. All visitors are asked to register. Visitors can register at the counters in the foyer prior to admission, but it is preferred that they pre-register.

Pre-registrations can only be made through the AWISA website, www.awisa.com.

SAFETY AND CHILDREN

AWISA 2016 is a workplace with woodworking machinery on display and in operation. In the interest of safety, children over 6 months of age and under 15 years of age will not be admitted to the exhibition. AWISA prefers that children are not even brought to the venue. However, a professionally run children's hospitality suite is provided, with activities and entertainment to suit the various age groups being looked after. Space is available on a first-come first-served basis. Bookings are not accepted. By registering to visit, show visitors accept that the final decision about entry of children who appear to be under age will be made by the show managers.

ACCOMMODATION AND AFTER HOURS

There are over 50 hotels within two kilometres of the venue - in the Southbank and South Wharf area immediately adjacent to the Melbourne Convention & Exhibition Centre, and in the Melbourne CBD just across the river. Special rates have been negotiated at a number of these hotels. Visitors are

recommended to book early as this will give them a greater choice of room and hotel. The Lido Group has been appointed to handle visitors' accommodation. To book visit www.awisa.com/hotels. For air travel contact your favourite airline or travel agent.

AIRPORT SHUTTLE BUSES

A fleet of coaches will provide a complimentary shuttle service between Melbourne Airport and AWISA 2016, with the service running every half hour from 8.00am each show day, with the last service leaving the exhibition one hour after the close of the show each day.

On arrival at the airport go to the baggage claim area in domestic terminals, T1, T2 or T4, and look for the bus company representative with the AWISA sign. There will be a passenger pick up point outside T4 (Tigerair, Jetstar, Rex) and a second combined passenger pick-up point outside T1 (Qantas domestic), T2 (International), and T3 (Virgin Australia). Look for the bus with the AWISA sign.

At the venue the passenger drop-off and pick-up point will be at the bus stop in Convention Centre Place, near the Hilton Melbourne South Wharf.

LUGGAGE ROOM

Luggage can be left during the day at the AWISA luggage room. Items are stored at the owners' risk.

CAR PARKING

The venue car park is located underneath the exhibition halls, access off Normanby Rd. For more details on this and other car parks close to the venue, and for public transport options visit www.mcec.com.au/your-visit/getting-there/

AWISA 2016 IS ORGANISED BY THE
AUSTRALIAN WOODWORKING INDUSTRY
SUPPLIERS ASSOCIATION LIMITED.

T: 02 4861 7040
E: info@awisa.com

www.awisa.com

open the
door to great
machinery
and design

AWISA - Melbourne 2016

MELBOURNE

AWISA 
6-9 JULY 2016



WELCOME to this AWISA 2016 exhibition preview section of AWISA - The Magazine. This publication features just some of the products being displayed at AWISA 2016 by the 130 exhibiting companies. The show occupies 20,000 square metres of the Melbourne Convention and Exhibition Centre and is the largest exhibition ever organised by the Australian Woodworking Industry Suppliers Association.

AWISA 2016 is the must-see event for everyone in woodworking and associated industries and professions. Furniture manufacturers, cabinet makers, kitchen manufacturers, joinery manufacturers, architects, designers, shop and office fitters, builders, and other wood, timber, panel, aluminium, plastic, stone and glass processing industries are welcome to attend.

Visit the AWISA 2016 website, www.awisa.com to pre-register as a visitor, to book hotels rooms, for links to the major airline websites, to learn about AWISA's airport shuttle buses, and for links to the venue website for parking and public transport information.

AWISA exhibitions are a once every two year opportunity to be brought right up to date with all that's new in the industry. At AWISA 2016 all the major machinery, software, tooling, hardware and panel suppliers are exhibiting, along with many smaller exhibitors. All with innovative and interesting new products.



STYLELITE - CREATE FLAWLESS CABINETRY

StyleLite is the perfect material to create luxury kitchen and bathroom storage, bespoke furniture, and feature panels. It's an ideal solution for cabinetmakers, builders, architects and discerning homeowners looking to add the perfect touch to their creations. It is supplied in the form of laminated panels, in a range of thicknesses and sizes. Two finishes are available - an ultra high gloss, and a velvet matte. Both finishes offer a smooth, flawless surface with an unsurpassed depth of colour.

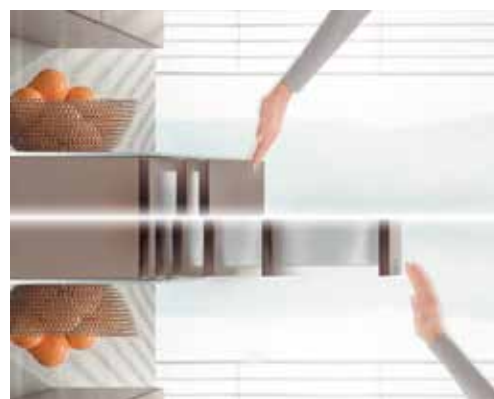
EGR
Stand 333
Phone 1800 347 347



INFINITE POSSIBILITIES FOR HANDLE-LESS FURNITURE DESIGNS

Handle-less fronts are playing an ever-increasing role in modern furniture and kitchen design. The minimalist look and clean lines place a spotlight on the functionality of furniture. Blum's range of motion technologies includes electronic and mechanical opening support systems that ensure handle-less drawers, doors and lift systems operate with the utmost ease. Create handle-less furniture designs with minimum effort. Preview Blum's latest motion technology Tip-On Blumotion, the mechanical opening and soft closing support system, at AWISA 2016.

Blum Australia
Stand 513
Phone 1800 179 186



ALVIC LUXE – ULTRA HIGH GLOSS, SCRATCH RESISTANT, PATENTED EUROPEAN PANELS

Luxe is an ultra-high gloss, scratch resistant, patented and unique European panel product. Its technologically advanced production involves various industrial processes that result in a decorative panel with a high-gloss finish.

Luxe is impact resistant with a scratch resistance rating of 7.5 newtons - the highest known rating worldwide for similar decorative panels - as such, it is registered and patented. Luxe can be cut on existing machinery, requiring no special tools and giving a polyurethane finish.

Nover
Stand 613
Phone 1300 668 371



ON THE CUTTING EDGE. INNOTECH ATIRA FROM HETTICH

The new InnoTech Atira drawer system by Hettich is full of character: Straight lines, clean contours, a choice of colours in a modern finish and a variety of additional elements complemented by versatile interior organisation solutions form the perfect mix for more individuality.

InnoTech Atira combines attractive options for differentiating with high cost efficiency by means of a platform concept. The freedom of design has no limits, because with InnoTech Atira, striking design meets proven technology.

Hettich Australia
Stand 603
Phone 1800 687 789



INSPIRING SPACE WITH LAMINEX

Laminex is a brand with its finger on the pulse. It's creative and innovative but above all inspiring. Choose from over 195 contemporary décors in the Laminex Colour Palette to create the ideal project colour scheme. Find a wide range of designs and colours from sunny yellows to stormy greys, as well as a selection of elegant timber-inspired woodgrains. The Laminex Redback laminate range now offers improved tight edge capability and comes with Protec+ antimicrobial protection as standard, for added customer peace of mind.

Laminex
Stand 526
Phone 132 136



FOR THE MOST COMPLEX MACHINING OPERATIONS THE ROVER B EDGE 5 AXIS EXCELS

Maximum productivity, even with the most complex machining operations, is a feature of the Rover B Edge – 5 axis. This model is competitively priced and allows users to carry out machining operations to shape and edgeband panels on a single machine.

The wide range of sizes, availability of working units and technologies unique to the market, means that the Rover B Edge range is ideal for medium to large as well as prototype production industry facilities.

Biesse
Stand 120
Phone 1300 BIESSE



FROM START45 TO F45 A MACHINE FOR EVERY BUSINESS

This year one of the most trusted names in the industry, Altendorf, is showcasing its full range of panel saws for every business need and budget. The comprehensive line up of machines range from the value packed Start45 to the brand new F45 series. Delivering high quality cuts with minimal time, these machines carry the time-tested formula for helping businesses thrive over the decades. There's a machine for every business, visit the Altendorf stand this coming AWISA in person to experience the difference.

Altendorf Asia Pacific
Stand 821
Phone 1800 558 258



SCHELLING'S ALL-ROUND CUT-TO-SIZE SAW

This machine revolutionises the operational sequences in cutting board shaped wood-based materials. The S45 does not only cut boards with highest efficiency, it also performs mitre cuts at the same time. The inclination of the mitres is freely selectable in a range from 0 to 46°.

There are no limits to the application possibilities of the S45. For many users the already existing workflows will not only become simpler and substantially more economical, but will also open new fields of application, new sales prospects and new customer groups.

The Wood Tech Group
Stand 701
Phone 03 9394 1333



SPECIALIST LABEL MANUFACTURER

All About Labels is a specialist label manufacturer. Cabinet Makers need their production labels to adhere well but then be able to be removed easily. The wrong choice of labels can mean extra man-hours and frustration for staff. With over 1000 sizes available, labels are manufactured both in rolls and A4 sheets. Labels are shipped Australia-wide. Talk to All About Labels about specific needs and get one of the sample label packs from the stand.

All About Labels
Stand 733
Phone 1300 762 603



INSURANCE AND FINANCE BROKING, FLEET MANAGEMENT

Across the Alliance Group, scale gives the buying power to secure better value. It's the group's promise that they always pass this value on to the client.

Alliance can take care of all personal and business insurance, finance and fleet needs in one place. So clients will benefit from all of the company's expertise, across all areas of business, all the time.

Alliance Insurance is a significant insurance broker in the Australian market. Alliance Finance and Fleet are also well placed in the fleet management market.

Alliance Group
Stand 941
Phone 1800 222 550



MASTERWOOD CNC'S A REPUTATION FOR EXCELLENCE

Masterwood Australia has represented the Masterwood brand in Australia for over 15 years. Built on a reputation of technical excellence and loyal after sales support, customers are assured of a personal service and attention to detail. A recent investment in a larger showroom allows for a greater choice of quality machinery, ready for immediate delivery. Masterwood SPA. is a leading innovator in CNC machinery that are fully designed, manufactured and assembled in Italy, ensuring unsurpassable quality and experience that guarantees satisfaction for the end user.

Masterwood Australia
Stand 821
Phone 02 9624 1096



THE QUANTUM LEAP IN EDGEBANDING

Enter the world of perfect invisible joints. The Holzher Lumina series is a guarantee for absolute quality, flexibility and productivity. Offering a unique combination for panel processing with two systems, the GluJet for use of PUR Glue and the Ltronic for laser edging. Feed rate of 25 m/min. Up to 25 NC servo-axes for maximum automation of all processes with exact repetition at the touch of a button. The Holzher Lumina series offers simple operation and complete professional machining with all required machining units.

Holzher Australia
Stand 833
Phone 1800 736 460



CNC-NESTING - EFFICIENCY IN THE SMALLEST OF SPACES

The Profit H08 from Format-4 is the CNC machining centre for professional nesting applications in the smallest of spaces. Designed specifically for universal purpose, it is the high precision and productivity when processing varying materials that particularly impresses about the profit-making all-rounder. The Profit H08: maximum profit in the smallest of spaces

Felder
Stand 845
Phone 02 4735 1011



MODIFICATIONS BY ONE CLICK

Top quality, shorter delivery periods and individual designs - key figures that require modifications at any time. The 3D software WoodCAD|CAM from Homag Eolution gives flexibility thanks to a customised library which can be modified anytime. For example, adding drawers, dividers, false backs or specific hardware to a basic cupboard is now easier than ever.

Homag Australia
Stand 307
Phone 1800 355 635



BREMA VEKTOR 15 AND THE EKO 902 OFFER VERSATILITY AND PERFORMANCE

Like all Brema range vertical boring machines, the Vector 15 is a sophisticated modular and versatile vertical CNC machine that supports the machining of different thickness and size formats with zero setup time, with the ability to modify or link multiple machines as needs change due to the flexible design be it stand alone or in line.

The EKO 902 high speed vertical drilling solution is a compact design that requires a reduced floorspace and combines flexibility with high performances allowing the management of different panel types and processes in real time.

Biesse
Stand 120
Phone 1300 BIESSE



DECOSPLASH

Boasting the ultimate trifecta of quality, affordability and visual appeal, DecoSplash® is the latest technology to grace the decorative splashback market. Exclusive to Lincoln Sentry, DecoSplash is a solid metal (2mm aluminium) splashback coated with a durable polyurethane powder coating.

DecoSplash is proudly Australian made, available in a range of standard and custom sizes and comes backed with a 10 year warranty.

Lincoln Sentry
Stand 456
Phone 1300 551 919



LEADING TRENDS WITH NEW COLOURS

As the fastest growing brand in the decorative surfaces category and one of Australia's leading trend setters, Polytec will be releasing a range of new melamine and laminate colours at AWISA 2016. Committed to innovation, Polytec decorative surfaces provide the medium for crafting thoroughly considered designs with a point of difference.

Polytec
Stand 529
Phone 1300 300 547



INNOVATIVE AND ERGONOMIC STORAGE SOLUTIONS FROM PEKA

Swiss based storage solution manufacturer Peka has developed and manufactured pull-out systems and complete solutions for the kitchen and furniture industry for 50 years. Peka has now partnered with leading distributor of cabinet hardware products, Lincoln Sentry, to start offering these innovating products to the Australian market.

The Peka range of storage solution products is covered by a 7 year warranty which gives that extra peace of mind when specifying one of Peka's products into a busy Australian home.

Lincoln Sentry
Stand 456
Phone 1300 551 919



SURTECO TECHNOLOGY MADE IN AUSTRALIA

Surteco is excited to present its trendsetting vinyl stock program to the Australian market. The fact that it matches Surteco's decor papers and finish foils offers designers and architects new ways of combining vinyls with melamine, HPLs or finish foils.

Surteco Australia will also display its latest designs and technology innovations like locally manufactured co-extruded ABS fusion, digital and acrylic edgebanding, adhesive and solvent ranges.

Surteco
Stand 649
Phone 02 9421 0300



SIGE WIRE WARE

The Sige Infinity Plus range boasts a unique modern design that aims to enhance and re-define the kitchen which surrounds it. The infinity Plus Wire Ware range is made up of a selection of pantries, corner units, pull-outs and laundry baskets all in soft close and available in chrome or Orion Grey for a stylish European feel. For the first time, see the new range of Sige Wire Ware bins at AWISA 2016 which have been designed exclusively for Wilson & Bradley.

Wilson & Bradley
Stand 621
Phone 03 9495 8900



NEW SERIES EDGE BANDERS FROM RHINO

Rhino never rests when it comes to advancing its edge bander range, while keeping price competitive. Rhino has now released SII of the Rhino R4000 (RC) rapid change and SII of the Rhino R5000 (RC) rapid change corner rounding edge bander. The Rhino R4000 RC is a large robust machine fitted with Italian motors, Delta Inverters, 20mt/min feed speed, Delta touch screen control, automatic adjustment of beam height and one touch thick to thin tape change.

Rhino Thatcher Group
Stand 829
Phone 03 9785 3222



BIESSE TAKES CARE OF TOMORROW'S STORAGE NEEDS TODAY

Biesse's experience in developing handling and storage solutions has led to the availability of a wide range of equipment able to provide panel processors with solutions that can meet the needs of low to high throughput manufacturing.

The Biesse Winstore is an automated warehouse solution for optimising panel management and guaranteeing production continuity with reduced times and costs. It can be integrated with nesting and beam saws to load and store panels of different sizes automatically.

Biesse
Stand 120
Phone 1300 BIESSE



SPECIALIST ADHESIVES AND COATINGS

Fortis Adhesives & Coatings is a specialist adhesives and coatings company based in Melbourne, Australia. The company specialises in the manufacture and supply of premium industrial adhesives, and specialty floor coatings.

Fortis Adhesives and Coatings has a full range of adhesives. Application areas include composite laminating adhesives, woodworking adhesives, timber adhesives, marine, specialty packaging adhesives and more. From high strength epoxy to polyurethane adhesives and cross linking PVA's. Fortis specialises in tailoring products to meet its customer's needs.

Fortis Adhesives & Coatings
Stand 633
Phone 03 9706 5448



WORK FASTER, SAFER AND MORE EASILY

Timbecon specialises in machinery, tools and accessories for solid timber and small cabinet shops. The company keeps two full ranges of router bits – industrial CMT and economical Torquata – on the shelf all the time, plus a broad range of products from Fastcap, including the Third Hand poles shown.

Featuring at AWISA will be new pocket hole jointing machines from Kreg, SawStop table saws, plus being able to try out many products from Fastcap, all things that make working faster, safer and easier.

Timbecon
Stand 865
Phone 1300 880 996



SHARING KNOW-HOW FOR BEST ABRASIVE RESULTS

Because sanding is not just a matter of the abrasive - it's all about the finish that is wanted. Innovative abrasive belts with patented backing, and discs for surprising new finishes. Workmate Abrasives believes that the effectiveness of a correct sanding cycle not only depends on the choice of the abrasive, but is rather the result of a more complex system of actions based on a new interaction between customer and supplier, that continuously share know-how.

Workmate Abrasives
Stand 111
Phone 02 9666 8555



Innovative abrasive belts with a revolutionary patented backing.

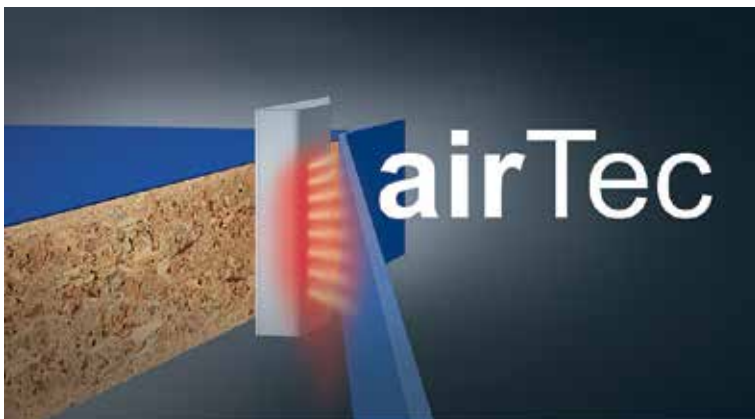


ZERO JOINT EDGES WITH AIRTEC AND LASERTEC

Homag's hot air system AirTec is both an industrial and craft-oriented solution. To achieve a zero joint finish, the function layer on the edging material is reactivated by compressed hot air, providing seamless adhesion.

Edge gluing quality that has never been seen before – Homag LaserTec is the new production technology and has revolutionised the edgebanding process. Increase the quality and productivity of production in an efficient and cost-effective way using minimal resources. This technology uses a laser beam to melt the surface to be glued, which is then pressed directly onto the work parts. The result: zero joint edges of the very highest quality.

Homag Australia
Stand 307
Phone 1800 355 635



CUT BACK ON THE COST OF SANDING WITH SCM

SCM wide belt sanders are the benchmark. On display at AWISA 2016 will be the SCM Sandya range. Sandya machines have been designed to satisfy high production and quality requirements for the woodworking industry. Typically equipped with two operating heads, the first head is a steel helical grooved roller which calibrates the workpiece. The second head is the versatile "CS" combination head and consists of a roller and sanding pad which gives a perfect finish – all the time, every time.

Gabbett Machinery
Stand 801
Phone 1300 GABBETT



DUST CONTROL MADE EASY

With 60% of Micronair's extractors in woodwork shops, the company understands the industry. Micronair starts with free airflow calculations and CAD duct design using unique software that eliminates guesswork to ensure that a new system will do the job properly. Based on modular design Micronair will then customise the extractor – pressure and volume, bin sizes, waste handling systems, heights and site orientation. This gives the best possible results without paying for features an installation does not require.

Micronair
Stand 149
Phone 03 9761 7011



BENCHTOPS, MELAMINE BOARD, PRINTED PANELS AND SPLASHBACKS

Presenting Smartform, the flagship 3mm tight rolled postformed HPL benchtops. Using most major suppliers' laminates. Tight rolled tops the others dream of. Don't be limited to a small range of CPL imported products.

Concept melamine board, 20 colours to choose from on EO MR MDF or HMR particle board. Short run specialists. 2400 x 1200mm. Any thickness up to 33mm.

InImage large format UV printing on glass, laminate, acrylic, Alucobond and many other substrates. 3D textured printing for splashbacks, feature walls, desk fronts corporate imaging.

Arrow Wood Products
Stand 650
Phone 03 9336 9000



INNOVATIVE ADHESIVE SYSTEMS

As a specialist amongst adhesive manufacturers, Kleiberit has been offering innovative adhesive systems and coatings for surface finishing to global markets for almost 70 years. The product ranges are designed specifically for customer requirements and the worldwide availability is ensured with an intelligent logistics concept.

Kleiberit has become a global trendsetter for PUR adhesive systems and is one of the leaders in reactive PUR hotmelts for various applications. Working closely with machine and material manufacturers, Kleiberit offers solutions that meet a wide variety of standards.

Kleiberit Adhesives
Stand 423
Phone 02 9907 1411



HARD-WEARING, FIRE-RATED INTERIOR WOOD SOLUTION

Combine the beauty of timber with the resilience, wear and stain resistance of laminate, and add in fire retardancy: Briggs Veneers Oberflex® real wood veneer laminates on Flameblock™ FRMDF are a perfect solution for all interior fitouts. Certified to Fire Hazard Group 2, in species such as oak, walnut and maple. Colours include natural, greys, black, cream, white, browns - pre-finished with a hard clear melamine surface.

Briggs Veneers
Stand 644
Phone 02 9732 7888



L & S LED LIGHTING

L & S Lighting is a world-renowned brand known for attention to detail, advanced product development and above everything else high standard of quality.

The range perfectly complements Wilson & Bradley's existing high end, quality products such as Blum and Wesco and is made up of strip lighting, cabinet down lights, sensor lights, overhead cabinet lighting and touch lighting. The L & S range also includes emotion lighting that has to ability to be changed by remote from warm white to cool light.

Wilson & Bradley
Stand 621
Phone 03 9495 8900



ENJOY THE MOVE, AT AWISA 2016

Grass Australia/NZ is looking forward to presenting the new Nova Pro Scala drawer system at this year's AWISA. Honoured with the Interzum Award and the German Design Award 2016, this complete drawer solution is already setting new benchmarks in all living spaces.

Further highlights include the innovative interior accessory system Tavinea 91, the cubist drawer system Vionaro with an additional drawer side height of 249 mm, and a hinge system for slim door applications as the latest addition to the Tiomos product line.

Grass Australia/NZ
Stand 444
Phone 03 9421 3048



HIGH POTENTIAL EFFICIENT NESTING

With the Dynestic series, Holzher provides modern production shops with the perfect entry into nesting technology. The solution for custom production for specific customers - even small jobs. Perfect nesting and cutting technology with mature software for rectangular and free-form nesting. The unique high-flow nesting table offers extremely high suction forces for workpieces. The machining head is equipped to fulfil all requirements. Precision is achieved through covered linear guides. The Holzher Dynestic series offers efficient nesting with high potential for automation.

Holzher Australia
Stand 833
Phone 1800 736 460



ENTRY LEVEL WITHOUT COMPROMISE

The Woodtron One is a high quality entry-level CNC machining centre for smaller businesses with limited space and budget. Available in stand-alone or with fully automatic loading and unloading, it's a great way to start automating a business without compromising on quality.

The machine comes with an on-board high-speed tool change that travels with the machine, saving valuable production time. Fully supported by Woodtron's online and camera remote support, the Woodtron One is the perfect entry-level machine.

Woodtron
Stand 140
Phone 03 9775 4100



SCM TRADITIONS

The SCM Group has always enjoyed a well-deserved solid reputation in traditional machines. The design and technology is second to none. Gabbett Machinery will be showcasing a large cross section of the SCM traditional range and the latest innovations, such as the new range of Xylent Spiral cutterblocks and Tera heads for planers and thicknessers. From panel saws, planing machines, spindle moulders and bandsaws, The SCM Group can offer a complete workshop with their well engineered machines.

Gabbett Machinery
Stand 801
Phone 1300 GABBETT



EDGES WITHOUT COMPROMISE

The Felder G 480 is the top model of compact class edge banding machines. Even with its standard equipment, the G 480 comes with a joint trimming unit with diamond cutters as well as an ultra-modern corner rounding unit for tip edge processing. A further highlight is the serially fitted Felder Quick-Set system which still ensures the most accurate and fastest form of manual edge change without any readjustment. Two free spaces for additional finishing units. Optionally fitted with a radius scrapper, flush scrapper or polishing unit.

Felder
Stand 845
Phone 02 4735 1011



IMA ADVANTAGE 400L EDGE BANDING

One of the most compact high-speed edgebanders on the market. Pushing IMA innovation capabilities the company has produced an edgebander that can outperform most of its larger opposition.

Fully automatic with speeds up to 30 metres per minute. Capable of doing EVA and PUR glues, together with the new Imajet air blower for laser edge tape.

IMA has a proven track record in Europe and around the world. Full connectivity between all machines allows the operator free production.

The Wood Tech Group
Stand 701
Phone 03 9394 1333



LEADING NESTING SOLUTIONS WITH ROVER A, ROVER B, ROVER S AND KLEVER

Biesse's Rover A FT, Rover B FT, Rover S FT and Klever CNC routers offer a wide range of innovative, automated nesting based manufacturing solutions, options such as automatic labelling or labelling on demand, and loading and unloading panels.

Biesse offers technological solutions which allow manufacturers to achieve maximum productivity with a minimum footprint. Increase productivity by up to 40% with the loading and unloading panel solution.

The Biesse nesting solution has been designed for production flexibility, maximum efficiency; high output and reduced labour requirements. Biesse routers are leaders in performance, quality machining and long lasting precision.

Biesse
Stand 120
Phone 1300 BIESSE



MOBILE EDGE BANDER AND MORE

The Festool Conturo – a uniquely innovative mobile edge bander machine is easy to operate with a unique cartridge gluing system which produces excellent results on rectangular components and complex curved shapes with an inside diameter as small as 50mm. External radii are also quick and easy to apply edging to. Also, see live demonstrations on a range of Festool tools designed for the woodworking and cabinetmaking industries - including the Domino joining machine and the unique Domino connectors.

Festool
Stand 861
Phone 1300 063 900



ACCURATE PANEL PRODUCTS LAUNCHES AT AWISA

Visitors will be introduced to a whole new world of panel manufacturing, with the launch of Accurate Panel Products, by the Accurate Group. Designed for the user, Accurate's complete range of timber panel accessories combines convenient solutions with long-lasting results. See the complete range of innovative CNC tooling, panel sawblades and edge banders. With Accurate's leading range of timber milling products and woodworking machinery also on display, visitors will gain solutions suited to their specific production assignment, all at one stand.

Accurate Group
Stand 944
Phone 1800 077 862



EUROPEAN PANEL PROCESSING AND EDGING SOLUTIONS.

Robland from Belgium is renowned for quality, professional, traditional woodworking and industrial CNC machinery. An extensive range such as Axis Ergo 3 axis panel saw with 3.8m sliding table, mitre cross cut fence and 1.5m CNC rip fence, blade adjustments with height and tilt touch screen display and digital cross cut flip stop. Also combination planer/thicknessers and more.

Gildo Profilati from Italy specialises in high quality aluminium edging in bronze, gold, silvers, chromes and in metallic and non-metallic colours. Custom printing available in 21-40mm widths.

Beyond Tools
Stand 913
Phone 08 9209 7400



SENSYS SHALLOW CUP - IF PRODUCT DESIGN AWARD 2016

The new Sensys shallow hinge impressed the 58 international jury members of the iF Design Awards this year. With its extremely shallow cup the hinge provides maximum design flexibility in making a mark of distinction.

It permits the use with thin door material such as 13mm compact laminate, PVC light board and bonded door panels. Thin solid front panels made, for example, of solid surface materials are also an option.

Hettich Australia
Stand 603
Phone 1800 687 789



iMOVE BY KESSEBÖHMER - FROM HÄFELE

A product that combines value for money and innovation is iMove from Häfele. This innovative solution turns an overhead cabinet into an ergonomic storage system with considerable space and function. The iMove is built on proven Kesseböhmer technology and is made of high quality materials, with simply smart mechanics. In a single effortless movement the iMove and all of its contents are pulled downwards and outwards, bringing unreachable contents within an easy to reach area.

Häfele Australia
Stand 501
Phone 1300 659 728



EXCEPTIONAL FINISHES AND FEATURES

Today's design market demands the versatility of exceptional finishes and features that meet clients' needs for clean, uncluttered living.

Tesrol's Likewood, Tecoboard and PureGloss products all achieve these concepts, and are available in a myriad of colours and finishes.

Coupled with a wide range of doors, panels and accessories in CustomWood, vacuum form and polyurethane give that premium elegance and unique finish to any project.

Kitchen, laundry, wardrobe or any joinery requirement will be enhanced using Tesrol's exclusive finishes.

Tesrol
Stand 448
Phone 1300 837 765



FENIX NTM - SMART MATT MATERIAL

Fenix NTM® is now available through Nover. This unique, super opaque, extremely matt nanotech material (NTM) is created by Arpa Industriale and made in Italy.

With super low light reflectivity, the Fenix NTM® surface is extremely matt, anti-fingerprint, resistant to scratches and abrasion, features enhanced anti-bacterial properties and a pleasant soft touch. Thanks to the use of nanotechnologies and next generation acrylic resins, plus the fact it is hardened and fixed with electron beam curing process, Fenix NTM® also has the ability to thermally heal superficial micro-scratches.

Nover
Stand 613
Phone 1300 668 371



MULTICAM TURNKEY CNC NESTING SOLUTIONS

Multicam Routing Systems will be showcasing the only Australian manufactured CNC Router designed specifically for the woodworking industry. The Multicam SR series CNC router features fully automated material loading and unloading, integrated dust extraction, automatic pop up location pins, multiple drill head, fully enclosed travelling automatic tool changer, barcode scanner and the latest release of KitchenCAD Pro software including optimisation.

This is a complete turnkey system that guarantees performance and reliability. Door manufacturers will appreciate the air-assisted constant depth attachment that ensures profiles are produced consistently and without depth errors on varying material thicknesses.

Owners of one of the many popular cabinet making software packages, can easily integrate this with a Multicam router to create a complete nested based manufacturing solution.

Supported by factory trained technicians Australia wide, owners are assured of prompt and efficient support. Multicam Systems has been supplying its range of fully Australian made CNC routing machinery for over 30 years to cabinet makers, shop fitters and kitchen manufacturers.

Multicam Routing Systems

Stand 921

Phone 02 4964 1900



BRANDT AMBITION SERIES - FOR ENTRY LEVEL AND INDUSTRY

The Brandt Ambition series offers small machines on entry level up to complete processing solutions. Depending on the machine type, the standard version is equipped with a precision gluing unit, a tiltable and end trimming unit and a multifunctional top/bottom trimming unit. A perfect finish is guaranteed by a radius scraper and a buffing unit. The Ambition 1230, 1440 and 1650 are also available with AirTec.

Homag Australia

Stand 307

Phone 1800 355 635



REPRESENTING THE INTERESTS OF INDUSTRY

The Cabinet Makers and Designers Association is an industry association representing the interests of businesses involved in the design, manufacture and installation of fitted furniture in commercial and residential areas. Visit CMDA and discuss industry matters such as training, industrial relations and standards with the CMDA staff and executive members. CMDA will be conducting one on one consultations regarding employment matters – book a time at the stand.

CMDA

Stand 938

Phone 1300 767 738



THINK DIFFERENT, LOOK DIFFERENT, WORK DIFFERENT

Coral Anti-Pollution has been specialising in dust and fume extraction for over 55 years. Coral's base product range includes fixed and portable systems, filtration systems, spray booths, industrial air flow fans, and industrial vacuums.

Coral has a product that will suit the end users needs. Coral looks forward to assisting its customers in this ever-changing woodworking industry.

On display will be examples of Coral products including Coral portable dust/fume equipment, Depureco industrial vacuums, and Coral Spray wall display.

Coral

Stand 112

Phone 03 8795 0100



RHINO BUSINESS STARTER PACKAGES

Rhino's business starter packages have been a huge success for Rhino, offering edge bander models coupled with a panel saw and dust extractor. Rhino offers its business starter packages at heavily discounted rates, including delivery, installation and 12 month warranty. During AWISA 2016 Rhino will also be offering a bonus free-of-charge, with every package order, a new RHINO RD-2000 portable edge bander.

The R4000 SII compact edge bander, 9030 twin bag dust collector, RJ3200S and RJZ3800 panel saws will be on display, along with the RD-2000.

Rhino Thatcher Group
Stand 829
Phone 03 9785 3222



EDGE-BANDING VERSATILITY WITH STREAM, ROXYL, AKRON, JADE, SPARK AND AIR FORCE TECHNOLOGY.

THE WIDEST RANGE OF EDGE-BANDING MACHINES

The perfect union between technology and configurability makes Stream a totally flexible machine in the working of straight and soft forming edges, maintaining elevated performances in terms of productivity, quality and reliability. It's the solution chosen by the biggest woodworking company worldwide.

The Roxyl is an automatic, single-sided edge banding machine, full servo driven to ensure the maximum flexibility in the easiest way. Biesse's Akron 1400 is a compact automatic single-sided edgebanding machine that offers many of the functions typical of an upper-range edgebanding machine at a competitive price.

Purpose built for craftsmen and shops that are looking for an affordable edgebanding solution, the Jade and the Spark range are user friendly, and allow customised production and flexible solutions in a limited space.

Achieve invisible edgebanding using the award winning, revolutionary Air Force System. By using a compressed hot air system, the edge tape bonds perfectly with the panel guaranteeing resistance to water and heat and an excellent long lasting quality finish.

Biesse
Stand 120
Phone 1300 BIESSE



THE NEW GENERATION IN MOULDING AND PLANING

Weinig Powermat series: Unlimited range of applications with perfect quality. The moulder is the centrepiece of any production facility. The Powermat series represent the optimal machine for profitable production for any application and any company size, from the small workshop to industrial series production, covering the widest range of applications, whether in profiling of mouldings, window production, beam planing, flooring production or pre-planing. With its modular design, the Powermat series can be adapted to individual requirements in terms of quality, flexibility and performance.

Weinig Australia
Stand 833
Phone 1800 736 460



SCM SIX. JUST ONE CUT - THE RIGHT ONE!

The SCM L'invincibile Six will revolutionise the way that panel saws are used, with the blade capable of tilting from 90 ° and ± 46 °. When selecting the inclination of the saw blade (left or right tilting) the overhead guard repositions itself automatically, without the operator having to make any manual adjustments to the machine – safe and simple. The L'invincibile range is second to none and this panel saw is designed for the true Artisan - take a closer look.

Gabbett Machinery
Stand 801
Phone 1300 GABBETT



NEW ADDITIONS TO BLUM'S LEGRABOX RANGE

Legrabox, Blum's elegant box system, is unprecedented in its level of performance and design. Supporting current design trends and customer demands who have embraced the release of Legrabox Pure, Blum will expand its Legrabox range to include Legrabox Pure in anti-fingerprint stainless steel and Legrabox Free. Legrabox Pure in anti-fingerprint stainless steel provides an elegant, high class solution for drawers and pull-outs. Legrabox Free supports intelligent unique designs in kitchen and living areas throughout the home. See it first at AWISA 2016.



Blum Australia
Stand 513
Phone 1800 179 186

LOOX SOUND SYSTEM 105 ENGINEERED BY HÄFELE

In doing what they do best, Häfele hits the market with its newest development - Loox Sound System 105. This innovative sound system allows users to design and build customised furniture with built in sound, which is sure to impress music loving clientele.

The invisible sound system was ingeniously developed so it can be fitted inside furniture. The built in technology sends vibrations through surfaces, transforming every piece of furniture into a sound conductor (speaker).

Häfele Australia
Stand 501
Phone 1300 659 728



HIGH QUALITY WOOD COATINGS AND FINISHING PRODUCTS

Mohawk Finishing Products is the leading manufacturer and distributor of professional wood touch up, repair and finishing products in the USA. Mohawk offers high quality wood coatings and finishing products, furniture polishes and cleaners, and touch up and repair products for wood and leather. Specialising in products for the furniture, cabinet and flooring markets, Mohawk is constantly experimenting and testing new methods and products to ensure that they deliver high quality products that are compatible with current market trends.

Multimaster
Stand 672
Phone 02 8536 9000



IMPROVE GREEN RATING WITH LEVEL A MDF

On a daily basis, Polytec strives to foster an eco-friendly and sustainable environment that minimises environmental footprints. Central to this is the manufacturing of products that are long-lasting and low-maintenance.

Polytec has been through rigorous testing and evaluation from Eco Specifier and has proudly been awarded Global Green Tag Level A Certification. As one of the world's most trusted and widely recognised Ecolabels, Green Tag's product rating system is designed to meet the requirements of the Green Star 'Sustainable Products' credits. Level A Certification awards a 100% Sustainability Factor rating.

Polytec
Stand 529
Phone 1300 300 547



JOIN A GREAT NETWORK

Beautiful bathrooms and fantastic kitchens from creative minds. HIA Kitchens and Bathrooms help manufacturers stay one step ahead of their competitors. HIA offers members innovative ideas, sound advice and exemplary products that allow them to run a smooth and efficient business. If AWISA 2016 visitors are looking for options to protect, promote and grow their businesses, visit the HIA Kitchens and Bathrooms stand. Join a great network of like-minded people.

HIA Kitchens and Bathrooms
Stand 472
Phone 1300 650 620



GRIGGIO UNICA SAFE - A SAFETY REVOLUTION IN PANEL SAWS.

Wood Tech is proud to be the exclusive supplier of the new Unica Safe panel saw – the safest machine on the market. This saw has a unique safety device that prevents worker injury from the saw blade.

Sensors detect workers hands and retract the blade in 5 milliseconds from contact with skin. This is 10x faster than a car airbag. This doesn't damage the saw blade and it takes only moments to reset the saw and continue work. Minimise injury and save money.

The Wood Tech Group
Stand 701
Phone 03 9394 1333



HELPING INDUSTRY SKILLS

ForestWorks helps industry become more productive, efficient, innovative and safe. As an industry owned not-for-profit, its core focus is on skills development initiatives that assist industry adapt to changing operating environments.

The FOLS Skills Verification Program and Forestry Better Business Program are key initiatives from ForestWorks, being developed in collaboration with industry. These innovative programs provide simple, transparent and efficient verification of professionalism and commitment to safety and environmental care. They support businesses to meet and exceed high standards.

Forestworks
Stand 950
Phone 03 9321 3500

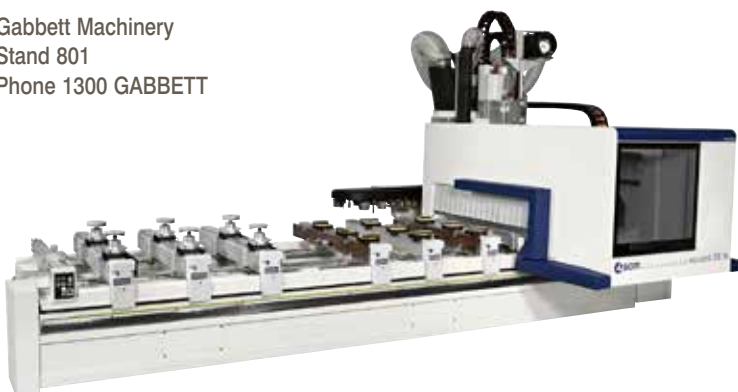


SCM 5 AXIS MACHINING - GOLD STAR PERFORMER

The SCM Group is always at the forefront of 5 axis technology. Gabbett Machinery will be unveiling the latest technology in 5 axis machines from the SCM Group at AWISA 2016. The SCM Accord 25FX is the ideal solution for all solid timber componentry.

Whether manufacturers are producing stairs, windows and doors or furniture, they will need to see this technology to believe it. With many successful installs Australia wide, the choice is simple.

Gabbett Machinery
Stand 801
Phone 1300 GABBETT



FINISHING SOLUTIONS FOR THE WORLD

Carlisle Fluid Technologies (formerly Finishing Brands) is the manufacturer of world leading brands of Binks, DeVilbiss and Ransburg which produce "cutting edge" high technology wet spray finishing equipment and just recently have acquired the quality MS Powder coating equipment.

Binks and DeVilbiss HVLP and Compliant technology spray guns, atomise paints to provide transfer efficiencies of over 60%, saving paint for the end users and dramatically reducing the emission levels of harmful VOC's into the atmosphere.

Carlisle Fluid Technologies
Stand 630
Phone 02 8525 7555



WEIMA WL 4 SINGLE-SHAFT SHREDDER

The innovative and rugged WL 4 single shaft shredder from Germany. This is the most popular model for small and medium sized joineries in Australia for shredding wood, MDF and particle board. Due to the ram-activated load control, the machine is capable of shredding through full material loads independently and without operators. It has a working width of 600 mm, a rotor diameter of 252mm and 18.5 kW drive performance. The "log-spacer" hopper makes it possible to shred large parts without bridging.

DKSH Australia
Stand 152
Phone 1300 133 063



PRECISION PANEL SIZING WITH SELCO

Selco is a leader in the engineering, design and construction of panel sizing systems with strong history of innovation and quality. As the proud recipient of numerous industry awards Selco has become the benchmark in the beam saw industry.

Selco manufactures a variety of models with an array of features to meet the needs of numerous industries such as wood, plastics and non-ferrous metals. Selco beam saws are high performance, single or multi cut line machines are available.

Biesse
Stand 120
Phone 1300 BIESE



NEW ERA OF MANUFACTURING: AUTOMATION

No more wastage of expensive offcuts thanks to intelligent stock management – the Homag Automation TLF 211 stands for smart logistics. It helps to reduce utilised capital from storing up to nesting or sawing and the material used is coordinated with the ordering system and the order planning. Running orders over night is not a problem, and there's no more manual handling necessary. The TLF sets the program a night before, picks orders over night and is ready for production the next morning. This all-rounder for a wide variety of panels is available as stand-alone or integrated cell solution.



ROBOTICS: MAXIMUM PRODUCTIVITY, HIGHEST AVAILABILITY AND OPTIMUM FLEXIBILITY

Robot applications guarantee a productivity jump. Robots improve workplace conditions and increase productivity and turnover. Homag Automation is the pioneer of robotics in the furniture industry.

Homag Australia
Stand 307
Phone 1800 355 635

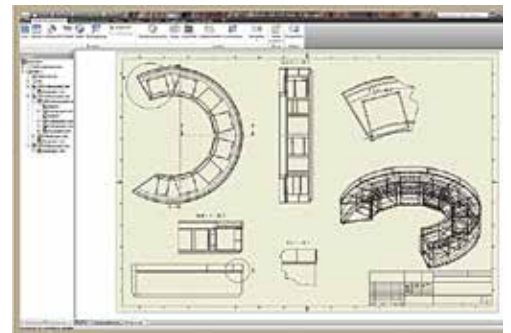


INCREASED PRODUCTIVITY WITH CAD+T SOFTWARE

CAD+T has provided software solutions for interior designers, furniture manufacturers and joineries since 1990. The software is based on AutoCAD® and Autodesk Inventor.

What makes CAD+T unique is the fact that users can draw in 2D and automatically get 3D models and construction drawings. From these drawings, production data like parts lists, bills of materials, CNC and nesting data are generated with one click. The complete solution prevents users from double work, saves time and money and eliminates errors.

CAD+T Australasia
Stand 946
Phone 0450 723 721



SHARPENING MACHINE SPECIALIST

Camco specialises in grinding machines and all consumables used in the manufacture and maintenance of saws and tooling. Range includes tungsten carbide, cobalt alloy saw tipping products, grinding wheels, and synthetic grinding oils and coolants. Camco represents Vollmer's and Loroch's range of saw grinding machines and Goeckel's knife grinding machines, and this year will be demonstrating the revolutionary new CNC rotary tool grinding machine from Nordutensili in Italy, the NU5A. The NU5A is a fully automatic, compact 5-axis sharpener with laser measuring eliminating the need for complex machine programming.

Camco Cutting Tools International
Stand 943
Phone 03 8336 1500



A UNIQUE JOINT SYSTEM

The brand ClevaClic comes under the Rodman Group banner. It serves to produce and provide the market with two main products - cabinet and wall cladding by ClevaClic.

Both products are based around the unique joint system invented by Unilin called Uniclic. The Rodman Group has been working closely with Unilin for the past three years on the two exciting products. Unilin, famous throughout the world for its flooring brand Quick Step, has thoroughly tested the products at its plants in Belgium and throughout the European industry.

ClevaClic
Stand 436
Phone 03 6334 5095



BLUM LEGRABOX PURE & AMBIA-LINE

Experience elegance with Blum Legrabox Pure, the exciting new addition to Blum's already extensive range of drawer systems. Boasting a new and silent runner system along with a new range of Orion Grey, Silk White and Terra black matt finishes, Legrabox Pure allows for a variety of applications and looks great in any room of the house.

To complement Legrabox Pure is the Ambia-Line inner dividing system including both steel frames with a minimalist design as well as kitchen accessories such as knife, plate and spice holders.

Wilson & Bradley
Stand 621
Phone 03 9495 8900



MEASURE AND ALIGN WITH SWISS PRECISION

More than 20 years ago now, Leica Geosystems invented the laser distance measurer. This product category is now popularly known as "Disto". Over the years the Disto team has been hard at work incorporating various advancements in technology to make Disto smaller, lighter, more powerful, and ever more useful. In the years since that first Disto, new products such as Lino laser level and the 3D Disto have been added to a long line of precision measuring equipment.

C.R. Kennedy & Co
Stand 631
Phone 1300 886 982



A SOFTWARE WITH UNIQUE FUNCTIONALITY

Integrated Joinery Solutions is the exclusive distributor for TopSolid'Wood in Australia and New Zealand. TopSolid has unique functionality that separates the application from the competition including the ability to manage and create extremely complex and curved joinery through its revolutionary ability to use its advanced parametric functionality. TopSolid is the only fully integrated CAD/CAM solution with a completely integrated 5 axis capability. TopSolid enables manufacturers to utilise CNC machines for 100% of their production including complicated work.

Integrated Joinery Solutions
Stand 408
Phone 02 9526 8300



START AN ONLINE CUT-TO-SIZE BUSINESS WITH JOINERY TRADE

Joinerytrade.com is a dedicated marketplace developed for cabinet makers to sell online. Don't let a CNC machine sit there unused when it can be making more money producing cut to size work. Manufacturers can sell flat pack cabinets, assembled cabinets, cut to size doors and other components on Joinery Trade. With no monthly membership costs and low fees, selling on Joinery Trade is a low risk way to start an online business. Start selling today.

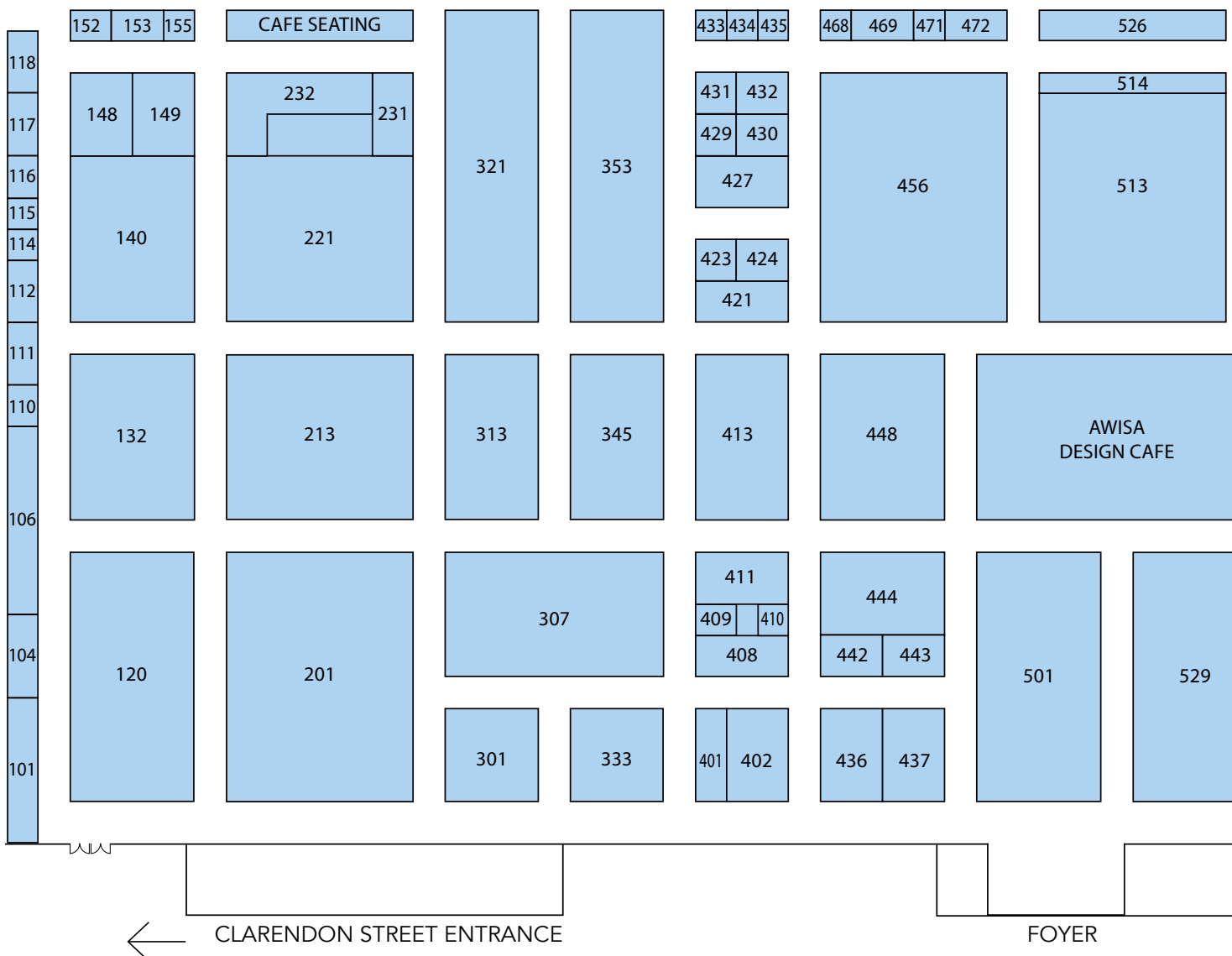
Joinery Trade
Stand 435
Phone 0477 201 301



AWISA 2016 EXHIBITORS

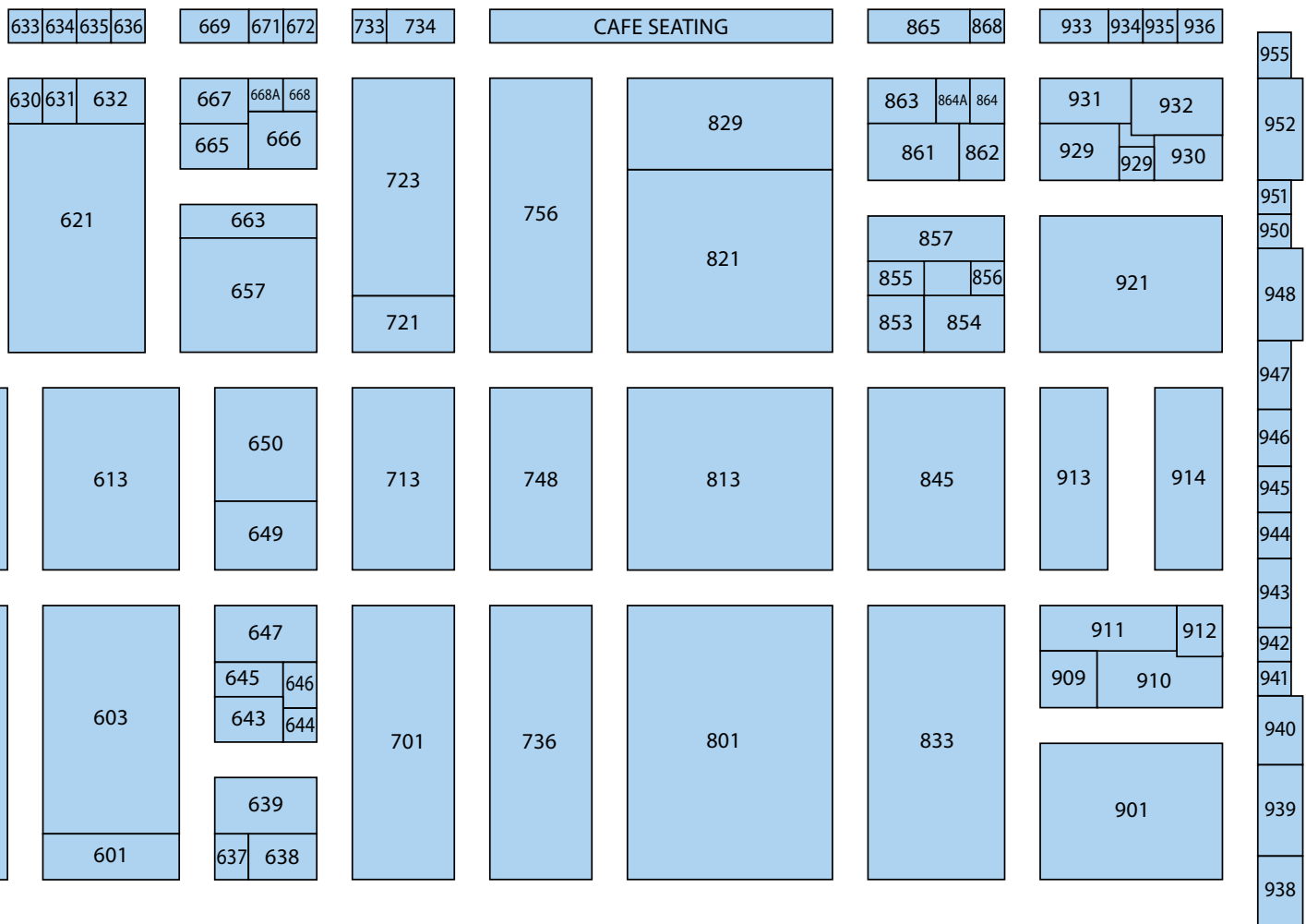
List correct as at 9 May 2016

Accurate Australia	944	Cabinet Makers Insurance Brokers	647	Felder NSW	845, 853
Admonter Natural Flooring	424	Cabot's Premium Woodcare	427	Festool Australia	861
Advanced Duct Systems	114	Cabtek Industries	410	Finlease (Aust)	104
Advanced Timber Systems	855	CAD+T Australasia	946	First Super	951
Airtight Solutions	231	Camco Cutting Tools International	943	Flexijet Australia	645
All About Labels	733	Carb-i-tool (Aust)	947	Forestworks	950
Alliance Insurance Broking Services	941	Carlisle Fluid Technologies	630	Fortis Adhesives	633
Altendorf Asia Pacific	821	CDK Stone	301	Furnishing Industry Association	940
Arrow Wood Products	650	ClevaClic	436	Furniture Cabinets Joinery Alliance	939
Austedan Fabrications	734	CodeLocks Australia	636	Gabbett Machinery	801, 813
Becker Pumps Australia	155	CompuSoft EQ Pacific	632	Glenco Air & Power	945
Bench Top City	401	Coral	112	Grass Australia NZ	444
Beyond Tools	913, 914	Design 2 Cam	637	H.M. Precision Grinding	153
Biesse Group Australia	120, 132, 201, 213	Designer Training	409	Hafele Australia	501
Blum Australia	513, 721	DKSH Australia	152	Hettich Australia	603
Boge Compressors (Australia)	955	EGR	333	Hideaway Bins	643
Brenner Engineering	952	Elite Publishing	471	Homag Australia	307, 313, 321, 345, 353
Breton S.p.A.	117, 148	Elumatec Australia	862	Hordern & Company	868
Briggs Veneers	644	Empower Software	431	Housing Industry Association	472
Brisbane Saw Service	863	Engineered Wood Products Association	935	I & J Machinery Sales	932
Busch Australia	931	Eurofit Hardware	411	Idacs	638
C.R. Kennedy Survey Solutions	631	Ezi-Duct	910	Integrated Joinery Solutions	408
Cabinet Makers & Designers Assn	938	Fairlab Exhibition Management	929	Joinery Trade	435





Junction Grange	864	Millsom Hoists	857	Striplox	646
Just Stone	402	MJ Machinery & Diamond Tools	118	Surteco Australia	649
Kaeser Compressors Aust	909	Money Resources Finance	110	TABMA	429
Karaboard	437	Multicam Systems	921	Tasman Sinkware	443
Kitchen & Bathroom Designers Institute	430	Multimaster Australia	672	Tensor Global	930
Kleiberit Adhesives Australia	423	New Age Veneers	657	Tesrol Joinery	448
Kockums Bulk Systems	933	Nover & Co	613	The Wood Tech Group	701, 713, 736, 748
Kory Dubai Manufacturing	948	Olmurtech	469	Thingamejig Precision Tools	856
Lamicolor	666	Planit Cutting Edge Solutions	901	Timba Tech	667
Laminex Australia	514, 526	Polytec	529	Timbecon	865
Laminex New Zealand	442	ProfiStop	912	Timber Veneer Association	634
Leda Machinery	723, 756	Pytha Partners Australia	601	Timberwood Panels	663
Leitz Tooling System	911	Qmani	671	Titus Tekform	413
Leuco Australia	106	QST Systems	639	Ville-Tec Engineering & Repairs	854
Linak Australia	669	Quebec Wood Export Bureau	115	Waiariki Institute of Technology	635
Lincoln Sentry	421, 456	QuickCAM Systems	936	Weinig Australia	833
Machines 4U	928	Rhino Thatcher Group	829	Wilson & Bradley	621
Magenta Publishing	934	Sage Doors	468	Woodtron	140, 221
Major Woodworking Equipment	232	Salestech	942	Workmate Abrasives	111
Masterwood Australia	821	Slice Veneers	665	Zeev Manufacturing	116
Micronair	149	Solid Setup	668		
Microvellum Software	101	Solu	432		



CONVENTION CENTRE →

RHINO FOR HOT AND COLD HYDRAULIC PRESSES

Rhino can supply both hot and cold presses in a range of sizes, tonnages, single or multi daylight. Rhino also offers glue spreaders to suit application, standard in 1300mm and 1600mm or special up to 2000mm. Rhino can custom quote to specific requirements and recommend the right press for any pressing needs. Presses on display will include the Rhino 3600 x 1500mm 6 cylinder 80T cold press, and the Rhino 3000 x 1300mm 4 daylight 100mm opening 150T hot press.

Rhino Thatcher Group
Stand 829
Phone 03 9785 3222



DISCOVER THE LATEST MACHINE FOR PROCESSING ADVANCED MATERIALS EASILY, THE ROVER PLAST J FT

Biesse's new Plast range of cutting-edge CNC work centres, beam saws and water-jet cutting systems meet the needs of the signage, display industry, building and industrial sectors, making it easy to produce POS displays and sophisticated 3D designer products etc. The new Plast range makes it easy to process plastic composite, acrylic, polycarbonate, alupanel, foam and vinyl.

The machines have oscillating and tangential knife devices. They use an advanced camera recognition system and feature advanced CAD CAM software.

Biesse
Stand 120
Phone 1300 BIESSE



NESTING SOLUTIONS FOR HIGHEST PRECISION

The Weeke Vantech comes in different sizes and it can be ordered as a stand-alone centre and with additional auto loading/unloading and automatic label printing for precise handling and identification of the workpieces. The machine comes in heavy steel gantry for high precision of cut quality; fast and accurate drilling is guaranteed by a patented drilling spindle clamping, and all sensitive electronics are housed in a separate control tower with filtered air conditioning to ensure long life.

THE BASIC MODEL

The entry-level Weeke Vantech could be the perfect entry into CNC technology. This basic model already comes with a lot of features including a full start up tooling kit, the latest WoodWOP operating software, German made Busch mink claw type vacuum pumps for the lowest power consumption and focused extraction and additional air jets under the hood to ensure the best possible extraction.

Homag Australia
Stand 307
Phone 1800 355 635



INNOVATION AWARDS

Boge Compressors is winning many awards for innovation with its compressor products produced in Germany and exported globally. Developing quieter and more efficient machines gives the end user greater space saving flexibility and more savings on the running costs over the life of the compressor. The Boge compressor model C30F is an example of a VSD machine producing from 28 to 128cfm at 8bar, being ideal for a small business with variable air demand.

Boge Compressors
Stand 955
Phone 03 5940 3266



PROCESSING ALUMINIUM AND PVC PROFILE

Machinery for processing aluminium and PVC profiles, made in Germany – come and talk to Elumatec at AWISA 2016. The extensive product range of good quality German-made machines, as well as the company's years of experience, will find a solution for any application. From simple machines through to highly complex CNC machinery- all available from Elumatec Australia. Saws, copy routers, CNC, training, relocations or just good old-fashioned advice are available from Elumatec.

Elumatec Australia
Stand 862
Phone 02 9725 2100

elumatec

HEBROCK EDGEBANDING

Germany quality and reliability at its finest. The Hebrock range removes any stigma associated with edgelanders. Now with the introduction of the laser edge tape, Hebrock has designed the new Airtonic system. With simplicity in mind, the machines are able to use EVA & PUR glue as well as with a press of a button start using the laser tape. The machine enables smaller high quality cabinet shops the chance to purchase a machine that they can use to control their own kitchens.

The Wood Tech Group
Stand 701
Phone 03 9394 1333



MAKE STONE BENCHTOPS EASILY WITH THE DONATONI JET 625 CNC

Intermac, a leading manufacturer of CNC machining centres and waterjet for stone, and bridge saw company Donatoni, have entered in to a partnership, offering complete stone processing solutions.

The Donatoni Jet 625 is a 5 interpolating axes CNC bridge saw and presents a revolution in stone and other substrata cutting. With a Z axis stroke of 400mm, rotating blade head rotating from -5 to +365 degrees, and tilting from 0 to 90 degrees, it is the ideal machine for performing all cuts.

Intermac
Stand 120
Phone 1300 243 773



NEW RELEASE PANEL SAWS FROM RHINO

Due to high demand for the Rhino RJJ Optimat series panel saw, Rhino is now offering this successful model in RJJ3800 with 3600mm maximum cut length. It includes German design sliding table, electric rise, fall and tilt of saw blade, automatic servo setting rip fence, overhead touchscreen control.

To complement its fully automated series Rhino will also have on display its highly sort after Rhino RJJ3200S hand wheel ball screw setting fence panel saw, which gives the operator full control of the saw from the one operator control position.

Rhino Thatcher Group
Stand 829
Phone 03 9785 3222



RE-CHARGE AND RE-CONNECT

FIAA is a not-for-profit industry association and registered training organization servicing the furnishing and cabinetry sector. As a peak industry body FIAA understands the challenges of modern-day business and endeavours to represent the industry in realistic terms, support the day-to-day running of a business with a workplace advice line and provide education and collaboration opportunities for its members.

At AWISA 2016, FIAA will be offering the chance to recharge and reconnect – with a coffee, and a networking space that provides Wi-Fi and power.

FIAA
Stand 940
Phone 02 4340 2000

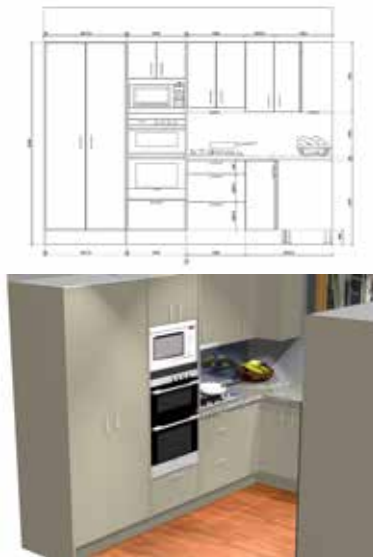


PRO100 FROM DESIGN2CAM

With sales and support from software experts Design2Cam, PRO100 is possibly the easiest to use 3D design software on the market. Windows-based, in PRO100 users simply choose, drag and drop, then stretch as desired.

With simple and proven integration to all the most commonly-used CNC machines, PRO100 software is already generating sales and production efficiencies for users across Australasia. It's simple to learn, quick to use, comprehensive in detail and flexible enough to suit any requirements.

Design2Cam
Stand 637
Phone +64 9 419 7362



THE LATEST IN HARDWARE INNOVATIONS FROM TITUS TEKFORM

The Titus Tekform stand will provide the opportunity to experience the following innovations: New Titus next generation hinge: T-type Glissando tuned to consumer preferred 'ConfidentClose'; the Tekform drawer, a family of drawers characterised by a simple mounting procedure including SW, DW and Thin DW drawers; Titusoft damper for metal drawer boxes, now in knock-in version and Titus multi-purpose damping technology. In addition, Titus Tekform will display the latest in decorative hardware and surfaces, its innovative range of Stefano Orlati LED lighting solutions, and its exclusive Tekform range of kitchen and wardrobe innerware.

Titus Tekform
Stand 413
Phone 02 9826 0007



BLUM'S DIGITAL SERVICES FOR MANUFACTURERS

Blum offers a variety of complimentary services for manufacturers including online applications as well as special planning and ordering software available to support daily activities. Using the Blum planning software Dynalog, cabinet planning for Blum fittings is complete, precise and achieved with ease. Blum's Online Product Configurator assists with the selection and ordering of the correct Blum fittings. Joining Blum's digital services for manufacturers is the new Easy Assembly App providing onsite assembly and installation support.

Blum Australia
Stand 513
Phone 1800 179 186



INNOVATION IN 3D CAD MEASUREMENTS

Flexijet 3D is a revolutionary laser CAD measurement system that measures and creates a 3D drawing at the same time. Its versatility and accuracy creates precise 3D CAD measurements in a fraction of the time compared to conventional methods. With an accuracy of 0.9mm (per 10m), measuring internal spaces including curves, arches and angled constructions are accomplished with speed and precision. Awarded a German Federal Innovation Award, it is an indispensable tool for any site measuring project.

Flexijet Australia
Stand 645
Phone 0414 873 372



LEDA - GOVE REVERSE PULSE DUST EXTRACTORS

Regarded as the best systems for both minimal maintenance and maximum performance, reverse pulse dust extractors use timed pulses of compressed air blasted through the filter tubes every 30 seconds or so, to keep them as clean as on day one. Nobody has to remember to clean anything. It just happens every minute of every working day.

The performance of the extractor never diminishes as all the filters remain clean. Effortless efficiency. Simply the best. Gove are among the world's leaders in this technology.

Leda Machinery
Stand 756
Phone 08 7127 7730



TEKNOS COATINGS

Distributed locally by Intergrain Timber Finishes, Teknos coatings are manufactured in Scandinavia to produce finishes of the highest quality and performance. With its advanced formulations, Teknos delivers highly durable, factory-finishes coating systems that protect against weathering, UV degradation, mould and fungal growth.

Cabot's Premium Woodcare
Stand 427
Phone 1800 630 285



VITAP POINT ACOUSTIC

The Point Acoustic drilling centre is a dedicated machine for the production of acoustic panels. This new machine boasts a drill bank of 54 or 55 spindles in two configurations for the fastest production on the market of acoustic perforated panels. Revolutionising the cost of production for such panels. Be the first to see it at AWISA 2016.

The Wood Tech Group
Stand 701
Phone 03 9394 1333



CEFLA MITO SPRAY PAINTING MACHINE

Single or dual-arm spray painting machines engineered for those seeking greater efficiency and flexibility into the finishing area. The Mito is suitable for all kind of paints, water and solvent-based materials, for applications on wood, plastic, glass, and metal surfaces. It has a conveyor belt with disposal paper or auto cleaning and paint reclaiming patented system, plus in-feed reading scanner to optimise the paint spraying area and reduce wastage. The quick removable spray unit is fitted with four guns in two circuits with recycling and a dual dry-filtration system.

Cefla
Stand 120
Phone 1300 243 77



CEHISA'S NEW SERIES. THE MACHINES THAT BUY TIME

Cehisa, one of the oldest names in the edgebander scene, is unveiling an all new series of machines. Sporting a new glue system that allows simple and efficient pot cleaning, large touch screen display, a corner rounding station that can perform routing regardless of profile, the new range is a tribute to the time saving technologies Cehisa has to offer. There are more features than mentioned so don't miss out, visit Cehisa and Altendorf's stand this coming AWISA to find out more.

Altendorf Asia Pacific
Stand 821
Phone 1800 558 258



CNC SOLUTIONS BY REDSAIL AND SAMACH, MANUFACTURED IN CHINA

Boutique routing and laser carving CNC machinery solutions such as Icarver 15 x 20" to Redsail RS6090 + RS80-7050 – ideal for small to medium size carving, routing and etching in arts and educational institutions. For cutting and etching complex shapes into wood, acrylic, plastic, and rubber. Samach's Oltre Pro is a range of CNC's designed for small to mid size workshops combining strength and quality at an economical price, and is for those users looking to integrate CNC practice with traditional techniques.

Beyond Tools
Stand 913
Phone 08 9209 7400



SCM K560 – MORE THAN JUST HOT AIR

The SCM K560 edgebander is built with one thing in mind - to give the absolute best finish possible. While the machine has the latest Airfusion technology, that's just the tip of the iceberg. Getting a 'zero glue line' is only one part of the puzzle. Users have to consider how well the machine finishes the board – high quality finishing groups are a must. Make no mistake about it - The SCM K560 is what all the fuss is about.

Gabbett Machinery
Stand 801
Phone 1300 GABBETT



CABINET VISION - THE ENGINE THAT DRIVES BUSINESS

Cabinet Vision is the underlying tool for businesses wanting to drive their design and manufacturing operations further.

It allows users to generate 3D customer renders, determine estimates for clients, produce cutting lists and factory drawings, CNC machining and so much more. Experience the benefits of saving time, eliminating costly mistakes and increasing productivity.

Cabinet Vision keeps the simple tasks easy and makes the complex jobs possible. Invest in the future and benefit from one of the most respected and trusted brands.

Planit – Cabinet Vision
Stand 901
Phone 1300 855 411



TOOLING FOR EXCELLENT FINISH AND EDGE LIFE

The Harmony 2.0 tooling family by Ake delivers excellent finish and edge life by controlling the chip removal. The chip is guided past the subsequent tip meaning users are no longer pushing the chip from tip to tip - resulting in brilliant edges and surfaces. This technology is available in applications including pre-milling, routing, rebating and shaping, including 5 axis applications.

Ensure tooling keeps pace with the latest machinery technology - Harmony 2.0 by Ake is the solution.

Salestech
Stand 942
Phone 03 9553 1883



STAY COMPETITIVE WITH PROFESSIONAL INDUSTRY TRAINING

DTA specialises in providing training for the manufacturing sector, home and building industry, and is well known as the industry leader in kitchen design, bathroom design and cabinet and joinery detailing training. With courses run all over Australia, DTA offers both nationally accredited training (qualifications) and short courses that allow businesses to keep a competitive edge by upskilling their employees.

Designer Training Australia
Stand 407
Phone 1300 850 725



SUPPLIER WOODWORKING MAGAZINE

Supplier Woodworking magazine and its new publishing partner Supplier Machinery magazine will be freely available to all AWISA visitors. Come to the Elite Publishing stand and see the extensive range of B2B trade magazines that keep readers in touch with all the industries Elite Publishing cover.

Elite Publishing
Stand 471
Phone 03 9890 0815



ADHESIVES, SEALANTS, CLEANERS

TEC7 is a range of top quality products for the professional. TEC7 products simplify maintenance, installation and construction. For incredible product demonstrations, expert advice and to discover this range of revolutionary products manufactured in Belgium, visit the Olmurtech stand.

Olmurtech
Stand 469
Phone 0426 177 150



INNOVATIVE NEW LAUNDRY HAMPER

The new 60lt base mount laundry hamper by Hideaway Bins is both ergonomic and design focussed - designed to keep laundry off the floor and hidden away. The hamper is lightweight and easy to remove with emphasis on air venting for moisture reduction, a solid base to protect the internal cabinet from drips and moulded handles for easy removal. The high quality over-extending soft-close runners have a covered frame for clothing protection - this innovative new design is a must for any laundry.

Hideaway Bins
Stand 643
Phone 1800 042 642



BE CREATIVE, BE DIFFERENT, STAND OUT WITH ADMONTER.

Admonter, Europe's largest high end producer of engineered wood floors and panels is all about design and creativity at this year's AWISA 2016. In a beautifully designed exhibit from award winning Melbourne interior designer Carole Whiting, Admonter will present a mix of products showcased to inspire and challenge the way that wood is used in interior design.

Making its debut will be Admonter's acoustic panels, which were launched at last year's Bau exhibition in Munich.

Admonter Natural Floors & Panels
Stand 424
Phone 0409 191 609



THE SCM PRATIKA SUCCESS STORY CONTINUES

The SCM Pratika 310MF was officially released at AWISA 2014. Since then, record numbers have been sold Australia wide. The small footprint, HSK toolholders, automatic toolchanging, dedicated drilling head and large vacuum pump makes this a complete solution.

On display will be the latest model, the SCM Pratika 310MFVR with additional tool spaces, a heavy duty cycle electrospindle, pushing device and unloading conveyor as standard. Take a close look at the Pratika 310MFVR. This machine ticks all the boxes.

Gabbett Machinery
Stand 801
Phone 1300 GABBETT



ONE MACHINE, FIVE AXES, NEVER-ENDING POSSIBILITIES

The individual processing of different materials is becoming an ever more important factor in universal workshops. The highly precise 5 axes spindle guarantees limitless creativity and reduces at the same time the initial investment and subsequent costs for special aggregates and tooling. Individual tooling configuration and fully automatic production for a small investment amount - the Format-4 Profit H50 makes the future of component manufacturing affordable.

Felder
Stand 845
Phone 02 4735 1011



WHERE TRADITIONAL WOODWORKING MEETS INNOVATION.

Virutex industrial quality woodworking equipment has been in the Australian market for 30 years with full support of spare parts, warranty and professional advice. Spanish made Virutex is renowned for niche market products such as hand held hot melt edgebanders, efficient lock mortisers, tiltable trimmers and now the new patented AB181 tiltable router for connectors, specially designed for trimming slots. Rikon is renowned for combining strength and quality woodworking machinery and accessories at economical prices enhancing the woodworking experience.

Beyond Tools
Stand 913
Phone 08 9209 7400



FIRST SUPER FOR THE WOODWORKING INDUSTRY

First Super has been looking after members and employers of the furniture and joinery, pulp, paper and timber industries since 1975.

Visit the First Super stand and find out how First Super can make super simpler for employers and better for employees.

First Super provides employers with efficient administration processes and a Clearing House solution. Dedicated local First Super coordinators to answer queries. Workplace information seminars and regional financial planning. Regular updates to keep employers informed about super changes.

First Super
Stand 951
Phone 1300 360 988



INTERMAC MASTER 33 – REVOLUTIONARY STONE CUTTING MACHINE

Intermac CNC machining centres are designed for companies wanting to develop their own stone bench top manufacturing capability using a highly innovative and reliable machine. The Master 33 CNC machining centre machines bench tops from natural and engineered stone slabs and other materials.

The Master 33 represents an evolution Intermac 3 axes work centres that are highly efficient with an excellent quality-price ratio. The possibility to equip the work centre with a fourth and fifth axis exists, further extending the flexibility of these machines and allowing them to adjust to the most varied of productive needs.

Intermac
Stand 120
Phone 1300 243 773



DEVOTED TO SERVICE

As a family company, Woodtron has grown from strength to strength on the basis of providing something unique that many of the competition can't – top quality service tailored to clients' needs, specialising in state of the art CNC machinery. Woodtron prides itself on its exceptional service and specialised expertise, as the company understands that efficient and cost-effective production is the life-blood of a business.

Woodtron stocks a full range of spare parts at its head office in Melbourne, along with consumables and tooling needed for the day-to-day use of a machine, so clients can be sure that everything needed to keep a machine running smoothly is just a call away.

Woodtron's remote support allows for technicians to aid a client over the phone with any issues that may arise, further decreasing down time and unnecessary call-outs.

Woodtron
Stand 140
Phone 03 9775 4100



BUSINESS FINANCE SPECIALIST

Finlease is a business finance company facilitating competitive finance solutions for machinery, vehicles and property purchases. Since 1989, Finlease has established its name in the woodworking industry as a reliable and honest company helping businesses get their finance needs under the best possible terms in the market. With a range of lenders to choose from and offices across Australia, manufacturers can be sure Finlease is serious about finance and the outcome for its clients. Finlease prides itself on being the ideal finance partner for SMEs.

Finlease (Aust)
Stand 104
Phone 0417 279 891

finlease⁺
TM
your equipment finance partner

CNC SPINDLE REPAIRS IN AUSTRALIA

HMPG offers complete spindle repair for all CNC woodworking machines. Whether the machine comes from Germany, Italy or Asia, HMPG can repair the spindles. The company has been manufacturing and repairing spindles at its plant in Victoria for over 15 years. With a background in precision engineering that dates back nearly 50 years, HMPG is the place to repair spindles. It offers cost effective repair and fast turnaround, all without leaving the country.

The service includes disassembly, replacement of bearings, component repairs, electrical testing of stator, re-assembly, balancing and final run-in.

HM Precision Grinding Service
Stand 153
Phone 03 9584 7077



LEITZ COMPRESSION ROUTERS NOW MADE IN AUSTRALIA

Leitz Tooling Systems operates as one of the global market leaders in tooling systems for machining wood, plastic and fibre cement processing. Being a complete service provider, Leitz not only offers standard and customised solutions for all machining applications, but also a vast range of services to increase productivity and competitiveness of its customers. On display during the AWISA exhibition will be the latest range of tooling including the new Australian made compression routers designed for nested based manufacturing.

Leitz Tooling Systems
Stand 911
Phone 03 9760 4000



EXPERTISE AND SUPPORT: HETTICH ESERVICE

Fast information, innovative planning, easy ordering has always been a strong focus for Hettich. Providing a comprehensive service package made up of various electronic solutions produced with the commercial architectural and cabinet making industry in mind. Whether planning, designing and managing orders – Hettich’s eService provides the best possible support for every activity online. The Hettich app provides comprehensive information for every user: catalogues, install videos and instructions can be viewed online. The online catalogue brings together all data relevant to every aspect of Hettich products.

Hettich Australia
Stand 603
Phone 1800 687 789



A COMPLETE RANGE OF WOODWORKING ADHESIVES

TimbaTech supplies a complete range of woodworking adhesives supported by technical assistance to the joinery, furniture, shopfitting, cabinet making, woodworking and building industries. Products include PVAs, crosslinking PVAs, modified crosslinking PVAs, clear and red spray grade contact adhesives, scraper and roller grade contact adhesives, contact cleaner, ABS edge cleaner, portable canisters of contact adhesive with gun and hose, urea formaldehyde adhesive with powder and liquid hardeners, resorcinols, a range of woodworking polyurethane adhesives, edge banding hotmelts and slugs

TimbaTech
Stand 667
Phone 03 9585 3116



DUROPAL LAMINATE PRODUCTS

Duropal has just released XTreme. Duropal XTreme is an anti-fingerprint chemical resistant postform grade laminate. It is suitable for bench top applications as well as residential and commercial fronts. Duropal XTreme is ideal for projects requiring easy clean and smear proof surfaces, also for those handle-less door fit outs. Bench Top City provides a pressed panel service with matching ABS edging. The company will also be exhibiting its new range of Quadra worktops, melamine boards and Pyroex splashbacks.

Bench Top City
Stand 401
Phone 03 9793 3918



MINIWINCH BY EFFEGI BREVETTI

The Effegi Brevetti Miniwinch mechanism allows for great access into cabinets. The unique dampening action for both opening and closing flap style doors, along with the subtle metal cable make Miniwinch a decorative and functional inclusion within furnishings.

All Miniwinch models can be applied in horizontal or vertical applications and are suitable for both left and right side mounting, making the mechanism ideal for very narrow cabinets.

Available in 3 modern cover cap options to suit many cabinet interiors. White, black and metallised silver. Miniwinch is manufactured in Italy by Effegi Brevetti.

Lincoln Sentry
Stand 456
Phone 1300 551 919



THE PIXALUX LIGHT PANEL - THIN, STRONG, BRIGHT

Pixalux light panels are a new and innovative form of lighting that completely changes the way lighting can be used. The innovation in Pixalux enables lighting to become an integrated structural element, creating a world of new design opportunities.

A Pixalux light panel emits light from its surface from LED light input into the edge of the panel. The panels themselves are made from a solid acrylic, making Pixalux a robust and structural 16mm panel.

Lincoln Sentry
Stand 456
Phone 1300 551 919



LEDA - KDT EDGEBANDING MACHINES

Several models from the large range of popular KDT edgebanding machines will be demonstrated at AWISA, including one for angled edges. With 20 metres per minute feed speed, perfect finishing and ultra-reliable operation, KDT has now established an enviable reputation around Australia.

The KDT machines are heavily constructed to work at higher production speeds than many higher priced models. Along with the important reliability factor, this higher production capability has generated many of the over 300 sales of KDT edgebanders around Australia in recent years.

Leda Machinery
Stand 756
Phone 08 7127 7730



QUICKCAM-SPEEDCUT - AUTOMATION PRODUCTION SYSTEM

SpeedCut is the new "game changing" nesting program from QuickCAM Systems, with a proven average increase of 17% in the total number of parts machined on any CNC. In addition to this, there are substantial savings regarding tooling costs, maintenance and machine wear, not to mention reduced labour and power consumption. SpeedCut is a module of the QuickCAM Automation Production System.

QuickCAM
Stand 936
Phone 02 9980 7011



DUST COLLECTORS AND FUME EXTRACTION

Ezi-Duct/Polex is one of Australia's largest manufacturers of dust collection and fume extraction equipment with a comprehensive, Australian designed and engineered high performance range.

The huge range offers new and innovative designs by qualified Australian engineers and all units have outstanding performance and are efficient to operate. Economical to purchase because clients deal direct with the manufacturer not an agent. Celebrating 20 years of business and branches in Melbourne, Sydney and Brisbane.

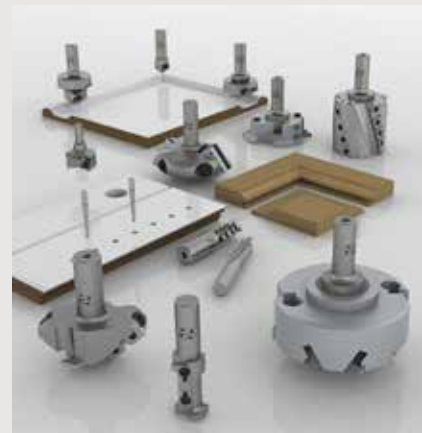
Ezi-Duct/Polex
Stand 910
Phone 1800 673 828



NESTING SYSTEMS, MORE THAN JUST THE TOOL

See some of the world's most innovative tooling. Cruing Nestmax and Speedmaster cutters for MDF and melamine board designed with special geometry and carbides give exceptional tool life and feed rates. Aerotech dust free nesting eliminates 95% of waste dust and reduces operating temperature by 60%. Fapil insert knives and Hi Lock chuck technology complement the process to run the tools with greater accuracy. Guhdo: specialised range of panel and beam saw blades plus tried and tested Duett panel saw sets. GDA: economical industrial blades for solid timber and aluminium.

Brisbane Saw Service
Phone 07 3266 8611
Stand 863



ELASER - PUT PROFESSIONALISM INTO MEASURING

ELaser is the latest in laser measuring technology by creating a room model straight from the measurements that are taken.

Benefit from improving accuracy, whilst reducing mistakes and the need to remeasure. Also benefit from being able to measure around obstructions and easily import the room into Cabinet Vision ready to begin laying out cabinetry.

ELaser is designed to give users accuracy and flexibility; helping them stay one step ahead of the competition

Planit - ELaser
Stand 901
Phone 1300 855 411



JOINERY INDUSTRY INSURANCE EXPERTS

Cabinet Makers Insurance Brokers is a leading insurance provider to the cabinet making, joinery and shop fitting industries in Australia. The company can significantly improve insurance coverage at competitive pricing. It prides itself on professional service and advice and can provide quote indications quickly. Visit the CMIB stand to discuss the company's products and services.

Cabinet Makers Insurance Brokers
Stand 647
Phone 1300 694 470



STEFANI SOLUTION MD – PERFECT FOR HIGH PRODUCTION

The Stefani Solution MD is the latest offering from Stefani high production edgebanders. The machine is an extremely versatile single-sided edgebander designed for larger companies with intensive use. With the "Startouch 12" electronic touch screen controller, the machine can carry out quick and easy programming.

The machine also comes ready to retrofit the Airfusion hot air system, the latest in edgebanding technology. The Stefani Solution MD is a must for serious production.

Gabbett Machinery
Stand 801
Phone 1300 GABBETT



BURKLE MULTI-LINE PUR APPLICATION SYSTEM

Wood Tech is excited to be unveiling the new Burkle Multi-Line PUR application system – the only one of its kind in Australia. The Bürkle product portfolio for "Flat Lamination" comprises modular line concepts from the individual machine up to turnkey solutions for the coating of boards, substrates and the fabrication of multilayered elements.

Wood Tech will be displaying a full operation high gloss Burkle PUR line capable of laying ultra-high gloss films on a variety of materials.

The Wood Tech Group
Stand 701
Phone 03 9394 1333



HANDLING RAW SHEETS AND FINISHED PRODUCTS

Kockums Bulk Systems offers the original VacuEasyLift and has a reputation for innovation, service and quality to meet any requirement. Whether just lifting or lifting and turning, KBS has the capability to offer both standard or bespoke solutions for most applications.

Kockums can show how it can value-add by meeting multiple requirements with the one lifting device. On display at AWISA will be a number of vacuum lifting solutions.

Kockums Bulk Systems
Stand 933
Phone 03 9457 8200



KOCKUMS Bulk Systems

INNOVATIVE SOLUTIONS FOR UNIQUE COMPONENTS WITH ALPHACAM

Alphacam is an easy-to-use CAD/CAM solution for manufacturers wanting fast, efficient toolpaths and the generation of reliable, machine ready CNC code.

Alphacam seamlessly integrates both 2D and multi-axis machining, providing an extensive list of cutting strategies which can be applied to any type of component. The emphasis behind Alphacam is to provide users with productivity, reliability and flexibility.

Don't let software be a limitation, Alphacam is a comprehensive solution for unique projects such as signage, plastic components, acoustic panelling, routed doors and so much more.

Planit - Alphacam
Stand 901
Phone 1300 855 411



FOR KITCHEN AND BATHROOM DESIGN PROFESSIONALS

The Kitchen and Bathroom Designers Institute (KBDi) is Australia's only specialist kitchen and bathroom design industry association, with a strong commitment to keeping design professionals at the top of their game. KBDi helps members succeed in design and design for success with regular networking opportunities, tailored professional development, accreditation, an annual designer awards program, international design tours and more. The organisation offers a range of membership categories to suit various levels of industry, from student designers to accredited designers, business groups and suppliers.



The Kitchen & Bathroom Professionals

Kitchen and Bathroom Designers Institute
Stand 430
Phone 1300 CKD CBD (253 223)

ADD MOVEMENT TO DESIGN

A modern kitchen is full of contradictions. It must be multifunctional and have an aesthetic, clean design. As the hub of the home it is now required to function as both a kitchen and a living / social space. By adding Linak actuators to a design, that are simply plug and play, movement is able to be added at the touch of a button. Providing the homeowner with the option to raise, lower, hide or even slide parts of the kitchen to create innovative designs.

Linak Australia
Stand 669
Phone 03 8796 9777



AT FOREFRONT OF CUSTOM FINISHES

Since its commencement in 1980, Tesrol has been at the forefront of innovative design and custom finishes. The company's hands-on family management team has ensured pride in workmanship and unique concepts that have seen their vacuum formed, painted, PureGloss, Likewood and Tecoboard ranges contribute to unprecedented success and national growth.

In the past 35 years, Tesrol has evolved from a simple door manufacturer to being at the forefront in architectural and interior design finishes and joinery products. A comprehensive choice of the highest quality door, drawer and board collections keeps Tesrol as a preferred supplier of Australian-made joinery.

Tesrol
Stand 448
Phone 1300 837 765

PRECISE ASSEMBLY FOR PERFECT MOTION

Precise assembly ensures Blum products function optimally. Blum's user-friendly machines and practical templates make assembly and installation efficient and simple, providing manufacturers with the necessary support at every stage of the manufacturing process whether required in workshops or onsite. Blum is pleased to be demonstrating Blum machinery, assembly devices and digital services for manufacturers; Dynalog, Blum's Online Product Configurator and a new app to support easy assembly on the interactive Blum Stand.

Blum Australia
Stand 721
Phone 1800 179 186



POLYTEC RELEASES THE NEW ULTRAGLAZE MIRROR GLOSS RANGE

Whether an exceptional personal space or a professional design is being created, Polytec's Ultraglaze mirror gloss range offers a new dimension in creating rooms of breathtaking beauty. The lustrous mirror-like high gloss finish captures the light and surrounding reflections.

This stunning collection of gloss surfaces is enhanced when combined with a sleek matching 1mm gloss edge or a contrasting glass bead edge finish. With an unsurpassed gloss level and superior surface quality the result is striking to say the least.

Polytec
Stand 529
Phone 1300 300 547



ANDERSON GENESIS EVO CNC

Anderson has a great track record in Australia and around the world. Building over 10,000 CNC machines for the world while keeping an eye on what is exactly needed for Australia. A full range of machines from the simple 2400x1200 Spectra range to fully automatic label printing lines for all panel sizes, with known reliability and improved performance.

Anderson has also focused on other markets. For example, the Cojet flat bed printer will be on display printing on all types of materials such as glass, MDF, particle board and plastic.

The Wood Tech Group
Stand 701
Phone 03 9394 1333



SANDERS, VERTICAL PANEL SAWS, INSERTING TECHNOLOGY, AND MORE

As a long-time member of AWISA, Ville-Tec will be celebrating 20 years as Costa Agent for Australia at AWISA 2016. The company will exhibit the latest Costa planer sander with the new 220mm planer head, with a representative from Costa on hand to answer any questions.

Also on display the latest Striebig Control 09 vertical panel saw with electronic positioning system. And finally Ville-Tec will show the speed and accuracy of the Gannomat inserting technology for hinges and dowels. Plus much more.

Ville-Tec
Stand 854
Phone 02 4648 1268



BECKER PUMPS - A BENCHMARK FOR THE INDUSTRY

For four decades Becker has supplied vacuum pumps to the industry. Today Becker is a number one choice when it comes to the use of vacuum pumps for clamping, conveying or coating of work pieces.

Safety is especially important for clamping of wooden work pieces. With this in mind, the robust and low-maintenance rotary vane vacuum pumps are very versatile, resulting in shorter processing times, precise results and gentle clamping of wooden sheets.

Becker Pumps Australia
Stand 155
Phone 1300 579 177



BRENNER FOR SPECIALIST MACHINERY

Brenner International is a privately owned Australian engineering company that has been producing machinery components, parts and products for more than 40 years, specialising in core holding products. A growing part of the business supports its international partners supplying products to the Australian and New Zealand market.

Barberán S.A. specialises in coating, digital printing, profile wrapping, laminating, post-forming, and a wide range of complementary machines designed to improve productivity and reduce manufacturing costs. Also represented is Wandres GmbH micro-cleaning systems.

Brenner International
Stand 952
Phone 03 9785 1288



HUGE RANGE OF GRINDERS, DIAMOND TOOLING AND BLADES

MJ Machinery & Diamond Tools supplies UTMA, Businaro, Kaindl, MVM grinders for sawblades, profile grinders, straight knife grinders, and CNC grinders. Viscat Fulgor butt welders as well as Utensil diamond and carbide tooling, sawblades and full range of Vortex compression cutters and CNC tooling.

M.J. Machinery & Diamond Tools
Stand 118
Phone 02 43 53 5713

MJ Machinery & Dia nd Tools

NESTING CUT DOWN TO SIZE - SCM PRATIX S18D CELL

Need a machine for large sheets but don't have a lot of space? Take a look at the SCM Pratih S18D. This nesting cell is packed with features including automatic loading and unloading, automatic tool change, a heavy duty cycle electrospindle, large 12 spindle drill block and a unique vacuum system to provide superior hold down.

Xcab Nesting software will also be on display. Cabinet design, nesting components and direct download to the machine - it couldn't be any simpler.

Gabbett Machinery
Stand 801
Phone 1300 GABBETT



EDGEBANDING TO THE MAX

Leda Machinery will display several models of the LMA Max compact and affordable edgebanders to complement the KDT larger and higher production models.

These hot melt glue pot Max machines range from basic end cut-off saws plus top and bottom radius trimmers only, to models with radius scrapers, buffs and even pre-milling. With accurate, digital readout settings, easy maintenance, outstanding reliability and excellent finishing, this Max range offers superb value for money.

Leda Machinery
Stand 756
Phone 08 7127 7730



MORE COMPRESSED AIR FOR LESS ENERGY WITH KAESER

Delivering more compressed air for less power consumption, the all-in-one Aircenter incorporates a compressor, dryer and air receiver all within a single housing, and it is just one of Kaeser's energy efficient compressed air solutions on show at AWISA 2016.

Kaeser will also be running a live demonstration of its Air Demand Analysis (ADA) measuring device, which collects meaningful and accurate data regarding a compressed air station's performance. The ADA can assist Kaeser in determining the most efficient system solution to meet a user's requirements.

Kaeser Compressors Australia
Stand 909
Phone 1800 640 611



NEW GENERATION MINK MV CLAW VACUUM PUMPS

The new Mink MV generation offers all the advantages of previous models, but with even higher energy efficiency, lower noise levels and smaller dimensions. Proven Mink claw characteristics such as dry and contact-free operation remain unaltered. No oil or other operating fluids are required in the compression chamber, making maintenance tasks such as oil and filter replacement unnecessary. Mink claw units are contact-free, so no component wear occurs and no replacement parts are required. Maintenance is confined to changing the gearbox oil every 20,000 operating hours.

Busch Australia
Stand 931
Phone 03 9355 0600



SPECIALIST HARDWARE SUPPLIER

Lincoln Sentry is one of Australia's leading suppliers and distributors of hardware and components to the building, shopfitting, and window, door and glazing industries.

It is Lincoln Sentry's mission to continue to grow its position as the supplier of choice by providing innovative, high quality products sourced from around the globe and supported by a value adding sales, service and branch network. What the company offers is simple - the best selection of quality products in 25 locations around Australia - underpinned by expert knowledge and advice. Visit www.lincolnsentry.com.au for more information.

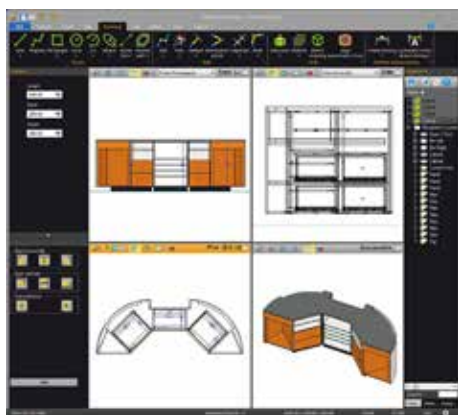
Lincoln Sentry
Stand 456
Phone 1300 551 919



PALETTE CAD 9 3D + 2D + VIEW + PRODUCE

Discover a vast array of new possibilities for design and persuasive presentations for clients at the user's fingertips. Impress them in the presentation phase with masterly performance that makes the craftsmanship shine. The practical advantages of Palette CAD do not end there. Use the data already created to generate perfect manufacturing drawings and to conveniently program CNC machines.

IDACS
Stand 638
Phone 1300 043 227



A CAD SOFTWARE OF CHOICE

Pytha 3D CAD is the software of choice for custom joinery, shopfitting, exhibition and event design, caravan and ship building, and many more design and manufacturing solutions.

It allows users to plan and model any design, make construction drawings, give photorealistic presentations and manufacture seamlessly; impressing clients, saving time, and saving on manufacturing.

Visit Pytha Partners at AWISA 2016 to see the latest in libraries, online learning and virtual-reality 3D design. Trial software will also be available.

Pytha Partners Australia
Stand 601
Phone 0434 268 002



NEW PRODUCTS AND INSTALLATION SUPPORT FROM BLUM

Blum is pleased to introduce new innovative motion technologies and has expanded the Legrabox offer with the introduction of Legrabox Pure anti-fingerprint stainless steel and Legrabox Free on display at AWISA 2016. The show's attendees will have the opportunity to experience a hands-on display of these new innovations on the Blum stand opposite the AWISA Design cafe. Appearing alongside these innovations, Blum will include its entire range of key products and services for manufacturers. Blum looks forward to welcoming visitors on the Blum stand at AWISA 2016.

Blum Australia
Stand 513
Phone 1800 179 186



FREE FAMILY, FLAP DOOR FITTINGS - ENGINEERED BY HÄFELE

The Free Family is a significant step for Häfele engineering. Setting a new standard for flap fittings in the market, could only be achieved by developing and manufacturing the product in-house.

The Free Family Fittings from Häfele cover all popular types of openings. Furthermore, E-drive for Free will be showcased. E-drive allows the flap to be effortlessly and effectively opened and closed all at the gentle tap on the front panel.

Häfele Australia
Stand 501
Phone 1300 659 728



HOLZMA PANEL SAWS: THE ALL-ROUNDERS FOR CRAFT AND INDUSTRY

Fast throughput, ease of operation, flexible – the 3 series from Holzma focuses on delivering for each unique application. The feature rich machine can be easily configured for your needs. The 3 series is the perfect match for companies that need high velocity throughput of single sheet cutting and the power to push through large volumes on demand.

Homag Australia
Stand 307
Phone 1800 355 635



BRINGING DESIGNS TO LIFE WITH VORTEK

Vortek is the revolutionary new way to present designs to clients. Inspire and immerse customers with a high-impact 3D visualisation platform for the sales team.

Let the client feel their designs come to life. Navigate through the design with virtual walk throughs, change colour and material selections in real-time and see the effect of true light reflections, all to enhance their buying experience. Vortek is helping businesses give their showroom a new and unique way of presenting designs to clients.

Planit – Vortek
Stand 901
Phone 1300 855 411



THE FUTURE OF BOARD STORAGE

The Woodtron Cube is an innovative fully automatic board storage system that holds multiple packs of board, individually picking the required sheet as production requires. It drastically increases ease and speed of production, all in a fraction of the footprint of traditional board storage systems. Woodtron has developed the Cube to suit economically minded businesses who realise that sacrificing vast amounts of floor space for board storage is inefficient and far from cost-effective. Suits factories of all sizes, and will help streamline production processes, saving time and money.

Woodtron
Stand 140
Phone 03 9775 4100



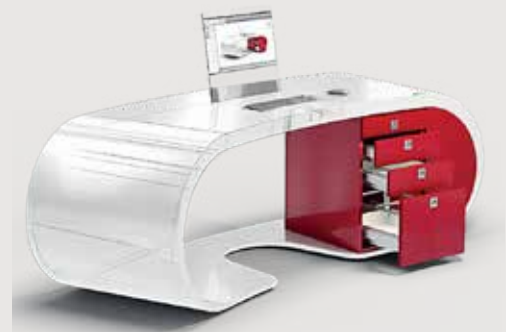
MODULAR 3D SOFTWARE SOLUTION

Imos® is a modular 3D software solution for manufacturers in the furniture and joinery industry.

It's a virtual cabinet maker; allowing manufacturers to build cabinets, add components such as hardware, edges, materials and have this relate to the cabinet they create.

Imos is recommended for businesses that have or are looking to buy a CNC machine, as Imos directly transforms the planning and design data into machine readable formats.

Imos (Laminex)
Stand 442
Phone 0800 303 606



1ST WEBER PRECISION LACQUER SANDERS ARRIVE

Haven't heard of Weber? If manufacturers haven't then they're definitely missing out, because Weber has the latest precision sanding technology available from Europe, and has 6 world patents - it's definitely worth taking a closer look.

See the new German built Weber KSN 2-1350 sander with all its features demonstrated, whether it be raw sanding of veneer, solid timber, melamine or post sanding undercoat before gloss, or gloss sanding. Weber has a solution for any wood processor.

Kory Dubay Manufacturing
Stand 948
Phone 03 9311 1113



SEAMLESS EDGE PROCESSING

Achieving the seamless edge and having the ability to change from neutral and darker glues at the flick of a switch? With the high-performance Homag Ambition 2470 edgebander, users are able to process a wide selection of material with optimum edge quality.

Increased output with a return conveyor

This patented panel return conveyor system is designed to automatically return panels from an edgebanding machine to the operator. The Homag Automation TFU 140 return allows one operator to continuously work at the edgebander returning parts back to him to be off-stacked or for reintroduction into the edgebander.

Homag Australia
Stand 307
Phone 1800 355 635



LEUCO NN-SYSTEM NO NOISE SAW BLADES

Leuco NN System DP Flex saw blades are extremely quiet when idling and during operation. With a noise level of just around 70dB(A) when idling, the wearing of hearing protection is virtually a thing of the past. Users profit from the new system blades on many types of machines such as table saws and chop saws, vertical panel sizing saws, CNCs and through-feed machines. The design guarantees universal application in almost all conventional wood-based panels as well as solid woods.

Leuco Australia
Stand 106
Phone 02 8708 4900



SALES AND BUSINESS MANAGEMENT SOLUTIONS FOR CABINET MAKING

Easyquote is a business management solution for the cabinet making industry. Import from CAD and create quotes for standard and non-standard cabinets. Place purchase orders and manage the projects through to completion.

Winner Design, is an exceptional user-friendly software designed to facilitate the everyday work of cabinet makers to increase their productivity and ultimately enhance their sales. Compusoft's large library of supplier catalogues make designing accurate and easy.

Compusoft
Stand 632
Phone 1300 883 875



EMPOWER JOB SCHEDULING AND FACTORY PRODUCTIVITY SOFTWARE

Quick, easy, effortless job scheduling designed specifically for joinery industry. Used by 200 kitchen manufacturers, shop fitters, furniture manufacturers and other manufacturers for 14 years. Tracking of start and finish of all jobs is live using PCs or tablets on the factory floor which automatically updates the job schedule live. Job schedule is viewed on PCs, phones, tablets from anywhere or 50 inch TV monitors in office and factory. Software payments are low cost weekly, software set up and operating within 5 days.

Empower Software
Stand 431
Phone +64 27 2284211



NEW MODELS OF KDT AUTOMATIC CNC NESTING ROUTERS FROM LEDA MACHINERY

The new generation KDT CNC router with automatic panel infeed, automatic panel positioning and automatic outfeed pusher with conveyor table, will be on show at AWISA. This safe, fast and heavy duty model with many superior features will attract close attention from discerning cabinet professionals.

Also on show, will be two other manually loaded KDT CNC nesting machines, one with basic equipment to suit smaller entry level customers and another mid-range model with rotary tool change, boring head and outfeed pusher to unload finished components. All three models are of heavy construction with powerful motors and drives designed for many years of hard work.

Leda Machinery
Stand 756
Phone 08 7127 7730



ROBOTIC SANDING LEADING THE WAY IN INNOVATION

The Viet Opera R is a robotised sanding machine offering precision and quality sanding never able to be achieved before. With the freedom to sand the panel in any direction and on different planes, such as the inside of profiles and shaped edges, it gives the operator totally flexibility, precision and a quality finish.

Viet Opera 5 is the new high performance for modest investment finishing centre. It is designed to satisfy the needs of small and medium-sized enterprises that require versatility and high technology content.

Biesse
Stand 120
Phone 1300 BIESSE



DENVER STONE AND GLASS MACHINERY

Wood Tech warmly welcomes Denver Glass & Stone Machinery into its exclusive range of premium products. Established in 1984, Denver's reputation stands for innovation and customer care. Today Denver is a large industrial group manufacturing high-precision mechanical components for the manufacture and processing of stone and glass based products. Wood Tech will be showcasing a state of the art Denver CNC machining centre and a Denver bridge saw.

The Wood Tech Group
Stand 701
Phone 03 9394 1333



KOELNMESSE – GLOBAL COMPETENCE IN FURNITURE, INTERIORS AND DESIGN

Koelnmesse is the world's top trade fair organiser for furnishing, living and lifestyle. At the trade fair hub of Cologne, leading international fair IMM Cologne as well as the trade fair formats of LivingKitchen, Orgatec, Spoga+Gafa, Interzum and Kind + Jugend rank among the internationally renowned and established industry meeting places. Over the last few years, Koelnmesse has added international fairs in the most important fast-expanding markets such as China, Singapore and Brazil.

Koelnmesse Australia
Stand 929
Phone 03 5332 2823



SPECIALISED ADHESIVE SUPPLIER

Tensor Global is an industry leading adhesive supplier, offering specialised production tools for its clients. These tools transform production processes and bring improved systems of work, enhancing operator environment and bringing increased productivity and profit. Tensor Global looks forward to seeing show visitors on its stand. Visit to see these products in action or collect a free sample.

Tensor Global
Stand 930
Phone 02 6175 0574





AWISA

2016

6-9 July 2016

Melbourne Convention
& Exhibition Centre
South Wharf Melbourne

Wednesday 6 July 2016 9.00a.m. - 6.00p.m.

Thursday 7 July 2016 9.00a.m. - 6.00p.m.

Friday 8 July 2016 9.00a.m. - 6.00p.m.

Saturday 9 July 2016 9.00a.m. - 4.00p.m.

MELBOURNE

AWISA



6-9 JULY

2016

www.awisa.com